

New Hanover Family Learning Center

- Information Meetings

- Monday, December 2 at 6:30 p.m.
- Saturday, December 7 at 9:00 a.m.



New Hanover Family Learning Center

- This will be a non-profit ministry of NHELC dedicated to providing a Christian-based education for children of age two through fifth grade. Our goal is to make all children feel they are welcome in our “family” by providing opportunities to experience God’s world through play-based learning activities.



The Ministry

- Christian Education for ALL children to learn about God's creation
- Supporting Childcare Needs of Church and Community Families
- Introducing Community Members to Our Other Ministries
- Increasing Utilization of Church Facility/Outdoor Space



The Program

- Christian Preschool with a State Certified Daycare
 - School year programs
 - Summer Camps
 - up to 103 students
- Classes/Ages:
 - Preschool: 2 years old through 5 years old
 - Kindergarten Enrichment: 5 years old
 - Before/After School: 1st - 5th grades
 - Summer Camps: 2 years old through 5th grade
- Hours of Operation
 - Certified Daycare: Daily 6:30 am - 5:30 pm
 - Preschool Program: Daily 9:00 am - 12:00 pm
 - Kindergarten Enrichment: Daily before/after public kindergarten
 - Before/After School: Daily

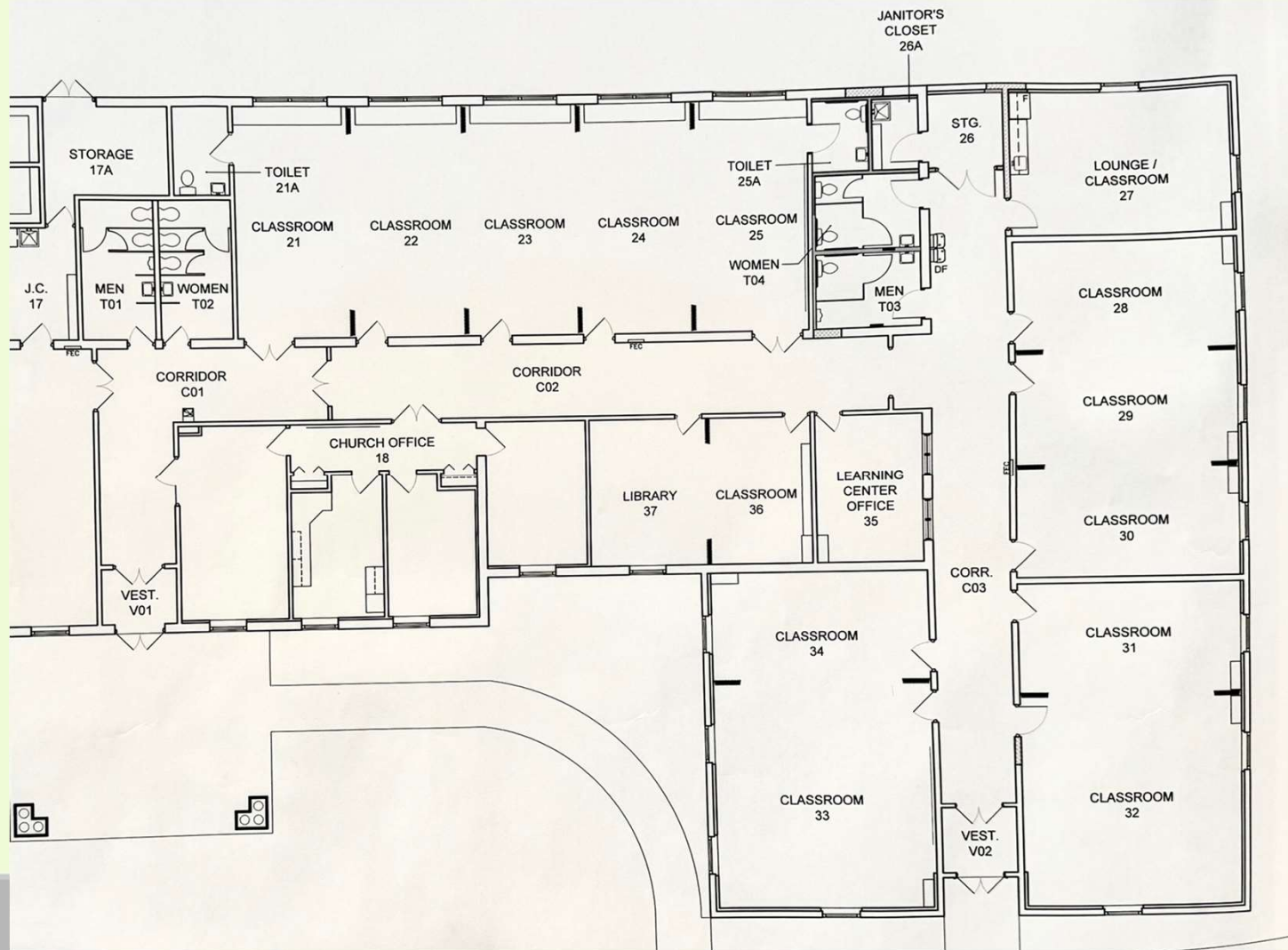


Staff

- Director
- Assistant Director
- Teachers and Assistants
- Business Manager
- Cleaning
- Maintenance



The Learning Center Physical Drawing



The Learning Center Finishes

FINISHES FOR THE
LEARNING CENTER AT
**NEW HANOVER
LUTHERAN
CHURCH**

FINISH KEY

AT-1	ACOUSTIC TILE	CELANGS	RB-1	RUBBER BASE	CLASSROOMS & CORRIDORS
C-1	CARPET	PRESCHOOL OFFICE	RB-2	RUBBER BASE	MEN'S TOILET
LVP-1	LUX VINYL PLANK	CORRIDORS	RB-3	RUBBER BASE	WOMEN'S TOILET
LVP-2	LUX VINYL PLANK	CLASSROOMS	TP-1	TOILET PARTITION	MEN'S TOILET
LVP-3	LUX VINYL PLANK	MEN & WOMEN TOILETS	TP-2	TOILET PARTITION	WOMEN'S TOILET
PL-1	PLASTIC LAMINATE	CLASSROOM	VL-1	VINYL	ACCORION PARTITION
PL-2	PLASTIC LAMINATE	COUNTERTOP	WC-1	WALK-OFF CARPET	VESTIBULES
PT-1	PAINT	CLASSROOMS & CORRIDORS	WD-1	WOOD	DOORS
PT-2	PAINT	MEN & WOMEN TOILET			
PT-3	PAINT	ACCENT STRIPS & DOOR TRIM			
PT-4	PAINT	VESTIBULE DOORS & WINDOW TRIM			



Budget/Cash Flow



Financing Options

- (optimal) Truist Bank
 - up to \$680,000 for all start-up costs
 - 10-year loan
 - 3% (cash secured), 6.5% (building secured)
 - monthly payments (3%) = \$6,566
 - monthly payments (6.5%) = \$7,721
- (alternative) ELCA MIF loan
 - up to \$600,000 for all start-up costs
 - 10-year loan
 - 7.785%
 - construction costs only
 - monthly payments = \$7,210
 - additional funds needed for operational startup costs



The Numbers

- “up to \$680,000” loan amount
 - \$400,000 - construction
 - \$150,000 - startup costs
 - \$42,000 - construction contingency
 - \$30,000 - Year 1 deficit
 - \$53,000 - Jan. to Aug. 2025 loan payment



Next Steps

- Congregation Approval to move forward
 - **Sunday December 8th**
 - Immediately following worship service in Sanctuary
 - Vote: Approval to secure up to \$680,000 loan amount to initiate the Learning Center Ministry
 - The Council has been significantly involved in the Learning Center planning process and recommends approval to proceed



Questions?

