

Welcome to worship at New Hanover Lutheran Church

Harvest Home Sunday
September 25, 2022



Consideration of and care for those in need (especially those “at our gate,” visible to us, of whom we are aware) is an essential component of good stewardship. It is in the sharing of wealth that we avoid the snare of wealth. It is the one whom death could not hold—who comes to us risen from the dead—who can free us from the death grip of greed.

**The Rev. Scott Staub, pastor
Patricia Nyce, director of music ministry**

We love our neighbors with healing and feeding them!

**All worship can be viewed online at
newhanoverlutheran.org,
facebook.com/NewHanoverLutheranChurch
and on YouTube.**

**May your worship experience strengthen you
with God's love and grace.**

Welcome

Prelude *Black Key Tone Poem* Bob Clark
Handbell Choir; Patricia Nyce, organist

Greeting

The grace of our Lord Jesus Christ, the love of God, and the
communion of the Holy Spirit be with you all.

And also with you.

Prayer of the Day

Let us pray.

O God, rich in mercy, you look with compassion on this troubled
world. Feed us with your grace, and grant us the treasure that
comes only from you, through Jesus Christ, our Savior and Lord.

Amen.

Gathering Hymn *Sing to the Lord of Harvest* ELW #694

Children's Message Ariel Hansley

Word

The Gospel speaks to us in scripture reading, preaching and song.

Gospel Reading Luke 16:19-31

The holy gospel according to Luke

Glory to you, O Lord.

[Jesus said:] ¹⁹“There was a rich man who was dressed in purple and fine linen and who feasted sumptuously every day. ²⁰And at his gate lay a poor man named Lazarus, covered with sores, ²¹who longed to satisfy his hunger with what fell from the rich man’s table; even the dogs would come and lick his sores. ²²The poor man died and was carried away by the angels to be with Abraham. The rich man also died and was buried. ²³In Hades, where he was being tormented, he looked up and saw Abraham far away with Lazarus by his side. ²⁴He called out, ‘Father Abraham, have mercy on me, and send Lazarus to dip the tip of his finger in water and cool my tongue; for I am in agony in these flames.’ ²⁵But Abraham said, ‘Child, remember that during your lifetime you received your good things, and Lazarus in like manner evil things; but now he is comforted here, and you are in agony. ²⁶Besides all this, between you and us a great chasm has been fixed, so that those who might want to pass from here to you cannot do so, and no one can cross from there to us.’ ²⁷He said, ‘Then, father, I beg you to send him to my father’s house—²⁸for I have five brothers—that he may warn them, so that they will not also come into this place of torment.’ ²⁹Abraham replied, ‘They have Moses and the prophets; they should listen to them.’ ³⁰He said, ‘No, father Abraham; but if someone goes to them from the dead, they will repent.’ ³¹He said to him, ‘If they do not listen to Moses and the prophets, neither will they be convinced even if someone rises from the dead.’”

The gospel of the Lord.

Praise to you, O Christ.

Message

Brian Jenkins, executive director, Chosen 300

Song of the Day

Into the Wild

Diana and John Hazel, Josh Young and Emily Gates

I'm a traveler

Just looking for a home

Somewhere past the sun

Into the unknown

I'm a prisoner
Where I refuse to grow
Take me past the pines
Where the fierce winds blow

Chorus

Running into the wild
Running into the wild
Running into the wild
I'm on my way I'm on my way (home)

There's mystery
Waiting to unfold
Stirring in the deep
Stories to be told

There's history
Where the canyons open wide
Calling out to me
Come and kiss the sky

I'm on my way home
I'm on my way home
Running into the wild
I'm on my way I'm on my way home

Like the rivers to the sea
Where the earth and heavens meet
Chasing down an endless destiny

Like the stars that fill the night
Let the wonder fill my eyes
I won't let this one life pass me by

I'm on my way home

"Into the Wild" words and music by Carter Frodge, Dan Bremnes and Mike Donehey. © 2021 Bremnes Ventures, Inc. (Admin. by Curb Music Publishing); Mike Curb Music (Admin. by Curb Music Publishing); cbfrodge Music (Fair Trade Music Publishing [c/o Essential Music Publishing LLC]); Fair Trade Music Publishing (Fair Trade Music Publishing [c/o Essential Music Publishing LLC]); remaining portion is unaffiliated. All rights reserved. Reprinted with permission under CCLI License #2329082.

Apostles' Creed

**I believe in God, the Father almighty,
creator of heaven and earth.**

**I believe in Jesus Christ, God's only Son, our Lord,
who was conceived by the Holy Spirit,
born of the virgin Mary,
suffered under Pontius Pilate,
was crucified, died, and was buried:
he descended to the dead.
On the third day he rose again;
he ascended into heaven,
he is seated at the right hand of the Father,
and he will come to judge the living and the dead.**

**I believe in the Holy Spirit, the holy catholic church,
the communion of saints, the forgiveness of sins,
the resurrection of the body,
and the life everlasting. Amen.**

Prayers of Intercession

God of grace,
hear our prayer.

Lord's Prayer

Lord, remember us in your kingdom and teach us to pray.

**Our Father, who art in heaven,
hallowed be thy name,
thy kingdom come,
thy will be done,
on earth as it is in heaven.**

**Give us this day our daily bread;
and forgive us our trespasses,
as we forgive those
who trespass against us;
and lead us not into temptation,
but deliver us from evil.**

**For thine is the kingdom,
and the power, and the glory,
forever and ever. Amen.**

Offering

Anthem

Many Gifts, One Spirit

Mary Lynn Lightfoot
Chancel Choir

"Many Gifts, One Spirit" by Mary Lynn Lightfoot. © 2001 Lorenz Publishing Company. All rights reserved. Streamed with permission under One License #A-701229.

Sending

God blesses us and sends us in mission to the world.

Announcements

Sending Hymn

Canticle of the Turning

ELW #723

Blessing

The Lord bless you and keep you.

The Lord's face shine on you with grace and mercy.

The Lord look upon you with favor and ✠ give you peace.

Amen.

Dismissal

Go in peace. Serve the Lord.

Thanks be to God.

Go get'em!!!

Postlude

Celebrate Life

Lani Smith

From Sundays and Seasons.com. Copyright 2022 Augsburg Fortress. All rights reserved. Reprinted by permission under Augsburg Fortress Liturgies Annual License #23853. New Revised Standard Version Bible, copyright 1989, Division of Christian Education of the National Council of the Churches of Christ in the United States of America. Used by permission. All rights reserved.



Announcements

Sound and video assistants needed for worship broadcast and live stream video. Training will be provided. For more information or to sign up, contact Pastor Scott at pastor@newhanoverlutheran.org or (610) 326-1335 ext. 1.

Sponsors are needed. Suggested donation for the bulletin is \$20 and flowers is \$35. Or, sponsor the *Word in Season* for \$35 a month. Contact Church Office Manager Susan Gutshall at (610) 326-1335 for available dates and to sign up.

Help avoid conflicts. Since activities at the church are back to normal, check in with staff before scheduling an event to be held at the church.

Today

Welcome to Brian Jenkins, who is offering the message this morning. Brian is the executive director from Chosen 300 Ministries.

Thank you for your donations to Harvest Home. Your contributions will help feed the homeless in Pottstown through the Chosen 300 Ministries program.

The bulletin is presented to the glory of God and in memory of Jane's parents, H. Joseph and Kathryn Weikel by Bryce and Jane Manthorne.

The flowers are presented to the glory of God and in memory of loved ones by Randy and Vicki Dotterer.

Serving Today Head Usher: Jim Gross; Ushers: Brian Flack and Rick Solazzo; Children's Sermon: Ariel Hansley

Next Sunday Head Usher: Barbara Repa; Ushers: Kathy and Doug Taylor; Lector: Barbara Noecker; Children's Sermon: Nikki Young

Altar Guild Serving this Month Lynn Fegley, Vicki Dotterer and Sharon Wise

Altar Guild Serving next Month Nancy Gross, Sue Care and Brenda Hunsberger

“Centered on Seniors” is a combination “Kick-off to the 2022-23 year/Sharing and insights about being a senior (think Golden Girls humor) today after worship in room 33. Bring your wisdom, joys, concerns and suggestions for upcoming Senior activities. And of

course there will be some snacks! After church, feel free to move your car around to the back of the Sunday School wing and enter through the ramped door by the garden. It will be unlocked. Contact Deacon Carol with questions.

Calendar

Worship Service – Today, 9:00 AM, sanctuary and online
Food Drop Off – Today, 9:00 – 10:00 AM, kitchen
Food Delivery Pickup – Today, 10:00 AM, portico
J.A.M. (Jesus and Me) – Today, 10:05 AM, room 1 (fellowship hall)
Centered on Seniors – Today, 10:15 – 11:15 AM, Room 33
Prayer Ministry – Monday, 1:15 PM, sanctuary
Cub Scouts – Monday, 6:30 – 8:30 PM, rooms 1, 21-31, 33, 37
Mission Service – Monday, 7:00 PM, room 4
Boy Scouts – Tuesday, 6:30 – 8:00 PM, picnic grove
Food Drop Off – Wednesday, 1:00 – 2:00 PM, kitchen
Food Delivery Pickup – Wednesday, 2:00 PM, portico
12 Step – Wednesday, 6:00 – 7:00 PM, room 32
Children’s Choir – Wednesday, 6:30 – 7:00 PM, room 15
Chancel Choir Rehearsal – Wednesday, 7:00 – 8:15 PM, room 15
Thursdays at Ten – Thursday, 10:00 – 11:30 AM, room 33
Bell Choir Rehearsal – Thursday, 6:15 – 7:30 PM, room 15
Harvesting Hope Fair – Saturday, 11:00 AM – 3:00 PM
Worship Service – Next Sunday, 9:00 AM sanctuary and online
Food Drop Off – Next Sunday, 9:00 – 10:00 AM, kitchen
Food Delivery Pickup – Next Sunday, 10:00 AM, portico
J.A.M. (Jesus and Me) – Next Sunday, 10:05 – 11:05 AM, room 1
Cub Scout Parents – 6:30 – 8:30 PM, rooms 1, 21-31, 33, 37

Upcoming Events

Harvesting Hope Fair The second annual Harvesting Hope Fair is this **Saturday, October 1st**, 11:00 AM – 3:00 PM in the church parking lot. Come for a fun-filled day and help change lives! Activities include: Touch-a-Truck, Tractors, Hayrides, Christmas Flea Market, Non-profit Ministries, Organic Garden U-pick; Drag Racing Cars, Family Fun and Games, Bounce Houses, Bee Demo, Family Photo Booth and Food & Beverages. All event proceeds will support the Loaves & Fishes Food Ministry and Garden of Hope. Also, you can help by being a sponsor. Call the church office (610-

326-1335) if you'd like to help or know of an organization that would like to become a sponsor.

Constant Contact is a weekly email listing events and worship news. Were you contacted on Monday with a Constant Contact email? If not, you can get on the list by calling the church at (610) 326 1335 or emailing your request to cc-admin@newhanoverlutheran.org. Don't miss out on all the latest news for NHELCL.

Choir rehearsals resume. **Chancel Choir** rehearses Wednesdays, 7:00 – 8:15 PM in the choir room (room 15). **Children's Choir** rehearses Wednesdays, 6:30 – 7:00 PM in the choir room. Interested in joining the Chancel Choir or Children's Choir? Contact Director of Music Ministry Patricia Nyce for more information. **Bell Choir** rehearses on Thursdays, 6:15 – 7:30 PM in the choir room. For more information about the bell choir program, contact Bell Choir Director Barb Eisenhart.

Calling All Bakers! Flutter is hosting a Bake Sale at the Harvesting Hope Fair on October 1st. If you are willing to bake something for the youth to sell, it would be greatly appreciated. Drop off your baked goods at church on Friday, September 30th, between 9 AM – 5 PM or 6 – 7 PM. Thank you so much for supporting the youth of NHELCL!

Flutter members, be on the lookout for an email with details about our two upcoming events. First, we are looking for volunteers to work the Flutter Bake Sale at the Harvesting Hope Fair on October 1st. This is a great opportunity to earn service hours! On Saturday, October 8th, Flutter will be holding a Halloween party from 6:30 - 9:00 PM. Costumes are encouraged! Any youth in grades 6-12 is welcome to participate. Reach out to Jen Boyer or Lindsey Waltermyer if you are not already on the email list.

“Thursdays at Ten, our midweek adult faith formation gathering, meets each Thursday from 10 - 11:30 AM in room 33. This informal discussion/study group will explore **“Fierce Women of the Bible.”** There were some sassy women back then! Both women and men are invited to journey back to biblical times to learn more about these “lasses” and how some things haven't changed. Look for more course details in the newsletter. Contact Deacon Carol with any questions. And feel free to bring a friend! **Please note:** There will be no class on October 6th.

The NHELC Book Club will be meeting at 6:30 PM, Tuesday, October 4th, at The Grind. Participants will be reading *The Couple Next Door* written by Shari Lapena. Hope to see you there! Join the group's Facebook page, NHELC Book Club, to stay up to date with what's happening! If you aren't on Facebook, contact Sharon Tracey at LBD36@aol.com for information.

Save this date! October 15th (rain date October 22nd) for the **Living History Cemetery Tour**. Tours are conducted every 20 minutes between 2 – 4 PM. **Please note** this year, folks who are unable to navigate walking the cemetery are invited to the 12 noon dress rehearsal which will be held indoors, so no walking outside is required! A free-will donation for this event will be received to help fund the cemetery restoration. Refreshments will be available. Come discover the long and fascinating history of New Hanover Lutheran Church and its members.

A fall yoga class will be held Thursday, October 27th, Friday, October 28th, Thursday, November 3rd, and Friday, November 4th from 6:30 – 7:30 PM in the nursery (room 21).

These beginners/all levels yoga classes will include gentle yoga, some slow flow and restorative postures with the intention of calming and grounding. "Breath Prayers" will be incorporated into each practice as affirmations of God's promises to love and care for us, to carry us, always, and to give us peace.

Anyone age 13 years and up (13-17 year-olds should be accompanied by an adult) can join.

Classes are free-will donation-based. Pay in cash or by check (checks payable to NHELC, note Peer Support or Food Ministry).

See Leslie Gates to sign up by October 23rd to ensure adequate spacing. Thanks!

All are invited to Frederick Living's Fall Festival on Saturday, October 8th, from 10 AM to 2 PM at 2849 Big Road, Zieglerville (Route 73). This family-friendly event features a wide variety of activities including games and fall crafts for children, a bouncy house, face painter, magician, fire truck, croquet and other activities for adults too, a costumed pet parade and more. The Wow Wagon Food Truck and Semper Pie cheesecake treats and other seasonal food will be available. The Coyotes western swing/folk band will entertain. Proceeds from food concessions and mum sales will benefit Pottstown Salvation Army and Frederick Living's Benevolent Care Fund. Bring a canned good for the Salvation Army or pet food for

Animal House (Pottstown charity that assists low-income pet owners). For more information call (610) 754-7878.

You Can Help

A Capital Funds Campaign is underway. Help NHELC raise \$247,500 for the HVAC and AVEL systems. Specially marked envelopes are available on the desk in the welcome center for your contribution. For more information, contact the church office at (610) 326-1335.

Volunteers are needed for the Harvesting Hope Fair! Scan the QR code below for a link to sign up to volunteer or contact the church office. There are a variety of time slots for volunteer opportunities such as serving food, working at the flea market tables, managing the bounce house, and more! You can sign up from 10:30 AM - 1 PM and/or from 1- 4 PM. (These time slots include setting up and cleaning up.) It will be a FUN day! Come and join us!



Help is needed for the Living History Cemetery Tour. Folks are needed to serve as tour guides, greeters and refreshment table servers. Contact Deacon Carol at carol.detweiler@newhanoverlutheran.org or leave her a message at the church office if you are interested or have any questions. This event is sponsored by the Seniors Ministry of NHELC.

Food Ministry

More than 90,000 meals have been delivered! NHELC's Loaves & Fishes Food Ministry is changing lives. And, you can be a part of the team. 1) You can donate food. Drop off your donation on Wednesdays between 1 – 2 PM and Sundays between 9 – 10 AM. Items most needed include: hamburger, chicken (thighs and breast meat), pasta (ziti, elbows, bowties), cheese (mozzarella, cheddar, parmesan), potatoes, fresh fruit (apples, oranges, bananas) and eggs. 2) Donate money through Thrivent Gift Cards, place monetary donations in the offering plate or mail to the church. 3) Deliver

meals. Sign up at <https://www.newhanoverlutheran.org/loaves-fishes-food-ministry/>.

Stories from our community Hello pastor! My name is Alec I'm a member of Unity Sober living homes. I just want to say how grateful I am to have people like you and the members of the church. When I first arrived I was financially unstable so the only meals I was able to eat came from you and the church. I see it happen frequently when newcomers enter the house and its a wholesome feeling to be able to make someone feel as though they don't have to stress about where there next meal is going to come from. Often people frown down on people in active addiction/alcoholism but it's extremely comforting to have a different side to the spectrum. I couldn't be more thankful for those who provide healthy varieties of meals on a weekly basis and I know that everyone in the houses feels the same way. For those who participate in doing so it speaks volumes about your character and provides a sense of hope in humanity that I selfishly removed from my frame of mind due to my past behaviors. HOPE YOU HAVE A WONDERFUL DAY! Thank you and God bless!

Spiritual Renewal

The *Word in Season* daily devotion books July - September are available in the welcome center and information box located outside by the Sunday school doors. The books are sponsored to the glory of God and in loving memory of her husband, John, by Joan Price.

Do you know someone who could use a **prayer shawl** to help bring comfort, healing and good thoughts? If so, contact Deacon Carol or Pastor Scott and they'll see that one is made available. We need additional knitters for this important ministry. Supplies and instructions are available now in the library located off of fellowship hall. Materials are on a bookcase close to the door. Contact Deacon Carol with any questions about this.

Need a prayer lifted up? The **NHELIC Prayer Chain Ministry** is here for you. All information remains confidential. To request a prayer, contact Deacon Carol at cdetweiler01@comcast.net or call the church office (610-326-1335) to leave her a voice mail. Your prayers will be delivered! Also, you can contact Deacon Carol to update circumstances or have a name removed from the Prayer Chain.

Prayer Warriors Wanted You are invited to join the warriors on Monday at 1:15 PM in the sanctuary. Participants join in a brief

devotion and then pray together. They give thanks and then lift up in prayers neighbors both near and far. See Donna Kehs or Marsha Staub if you have any questions.

Thank You

This year's flea market was another huge success! Thank you to all who donated their families beloved treasures to our cause. The donations this year totaled over \$800 and will help our Mission Service folks reach out and support those in need beyond our walls! PLEASE! PLEASE! Everyone come out to our Harvesting Hope Fair where all of your wonderful Christmas treasures will further support our outreach!

Congratulations

The wedding ceremony of Kevin Tracey and Joshua Barrett was held Friday at the Church of Saint John in Bala Cynwyd. May God bless them as they start their life together!

Remember in your prayers

Requests

Toni Rath, Katy Mahon-Miller, Matt Hall, Luann Hanley, Scot Smale, Carol Estes, William Trotter, Kathy Kane, Phil Underkoffler, Maxwell Girard, Pat Fryer, Jean Renninger, Kathy Campos, Richard Norris, Pr. Kork Moyer, Betty Lou Shadle, Julia Hauck, Tony Mancini, Raul Castro, Amy LeVan, Jeffrey Kunsch, Braydon Kline, Edwin Sugita, Wilma Lahr, Robert Tadley, Jim Price, Melissa, Bernadette Phillips, Mary Lou, Doug Weaver, Joan Wagner, Jaden Mahlbauer, Robert Ganovsky, Dorothy Bingaman, Emily Ocelus, Gates family, Eric and Wendy Hess, Sue Care, Herman Richard, Deb Matthews, Marceline, Anne Eshleman, Daniel Johnson, Gwen Grant, Chris Fatzinger, Hank Droneberg, Pena family, Kim Frain, Ken Jacob, Jen Perez, Frank D., Pam Helfrich, Barb and Tom Faust, Andy Van Dyke, Janet, Jerry Dotterer, Feryl Stein, Laurie Scoggins, Pam Abbott, Holli Muffler, Louise Karns, Mary Van Dyke, Elizabeth Lawson, Pr. Jennifer Phelps

Peace for the violence in our area and nationally

Long-term

Heather James, Sarah Bowman, Keeley Staples, Logan Conley, Sally Kohl, Tina Farrell, Carol Buchholtz Yost

Shut-in
Penny Frymoyer

Grieving
Family and friends of Mary Ellen Jonczyk and Harold Smale

Military
Shawn Dietz, Michael McHugh, Kevin Dugan, Jason Bernhard,
Craig Geiser, Patrick Mathias, Steven Kane, William Zearfoss, Will
Wilson V, Milton Jack Repa, Megan Fricker, Kyle Woods

New Hanover Evangelical Lutheran Church

2941 Lutheran Road

Gilbertsville, PA 19525

Office Hours: Monday – Friday, 9 AM – 3 PM

Call for an appointment. (610) 326-1335

Contact Information

Pastor, The Rev. Scott Staub

pastor@newhanoverlutheran.org

Director of Children, Family & Youth Ministry, Nikki Young

nikki.young@newhanoverlutheran.org

Church Office Manager, Susan Gutshall

susan.gutshall@newhanoverlutheran.org

Director of Music Ministry, Patricia Nyce

patricia.nyce@newhanoverlutheran.org

Food Ministry Director, Chris Fatzinger

Cfatzinger@chris-cooks.com

Director of Senior Faith Formation, Deacon Carol N. Detweiler

carol.detweiler@newhanoverlutheran.org

Bell Choir Director, Barbara Eisenhart

eisenbarb@aol.com

Bookkeeper, Maria Boyer

mariaboyer@comcast.net

Cemetery

Bill Bauer, rwbauer7@gmail.com

Norm Hunsberger, namron29@comcast.net

Financial Record

The table below shows NHELCC's income for the year as of August 31, 2022. The budgeted amounts are **8/12 of the approved 2022 budget to coincide with the months reported.**

	August Contributions	Jan-Aug Contributions	Jan-Aug Approved Budget	Percent Budget
Offering				
Envelope	\$16,049	\$104,610	\$114,667	91%
Simply Giving	\$10,352	\$81,311	\$89,000	91%
Loose Offering	\$385	\$2,668	\$3,333	80%
Designated Contributions				
Fuel Oil	\$850	\$3,752	\$6,000	63%
Bulletin	\$0	\$180	\$800	23%
Flowers	\$35	\$1,868	\$2,000	93%
HVAC Project	\$16,620	\$19,055	\$22,667	84%
AVEL Project	\$17,160	\$21,010	\$0	-
Food Ministry/Garden of Hope	\$6,434	\$38,094	\$36,667	104%
Peer Support Ministry	\$3,065	\$9,947	\$2,667	373%
Grants				
Peer Support Ministry	\$0	\$0	\$5,000	0%
Food Ministry/Garden of Hope	\$0	\$44,180	\$10,000	442%

Harvesting Hope Fair – October 1st, 11 AM – 3PM

Be A Pepper!

Sponsor our Harvesting Hope Fair.

100% of all donations go to help fight hunger!

Go to: <https://newhanoverlutheran.org/online-giving/>

Choose “Food Ministry” as the fund selection

or send a check to New Hanover Lutheran Church

(address is below) with a memo line “Harvesting Hope Fair.”

Sponsorship Levels

Bell Pepper Donations

up to \$250

Jalapeno Pepper Donations

\$251 to \$1,000

Cayenne Pepper Donations

\$1,001 - \$2,500

Habanero Pepper Donations

over \$2,500



All Donations will support the NHELK Loaves & Fishes Food Ministry and Garden of Hope nonprofit ministries that are feeding, saving and changing lives.

Join us for our 2nd Annual Harvesting Hope Fair. Food, beverages, pig roast and bake sale will be available - cash only. All other events are free or by donation. We will have a Touch a Truck/Tractor/ Dragster area, Hayrides, a Christmas Flea Market, Bounce houses and children’s games, Koo Koo the Cartoon Magician (at noon), a med-evac helicopter (time TBD), a non-profit vendor fair and more!

So be a Pepper and join the Fun!
2941 Lutheran Road, Gilbertsville, PA 19525

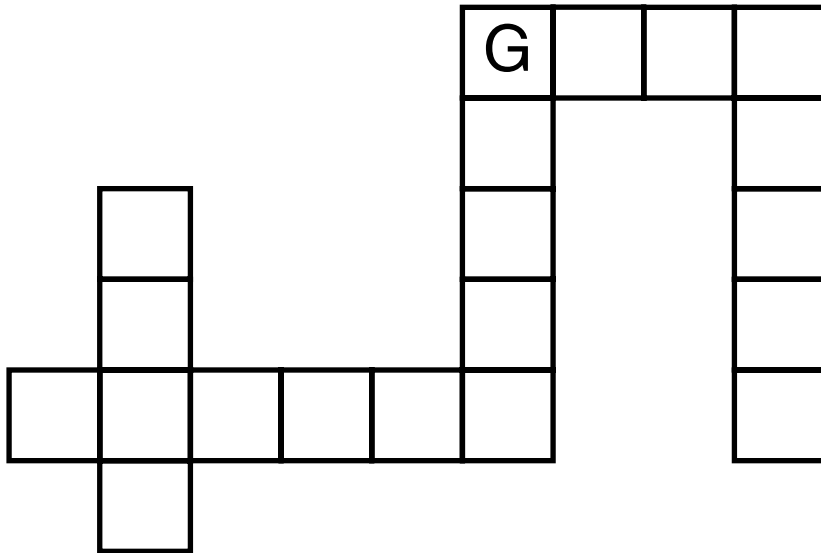
Send

Sharing God's gifts

Jesus told the story of the rich man and Lazarus to teach an important lesson:

SHARE GOD'S GIFTS WITH OTHERS.

Use those words to fill in the crossword puzzle.
(Hint: Place God's name first in the puzzle.)



Volunteer to help with the offering as an usher during a worship service. Where does the money go?

This week

Write prayers on strips of colorful paper. Join the strips together to make a prayer chain.

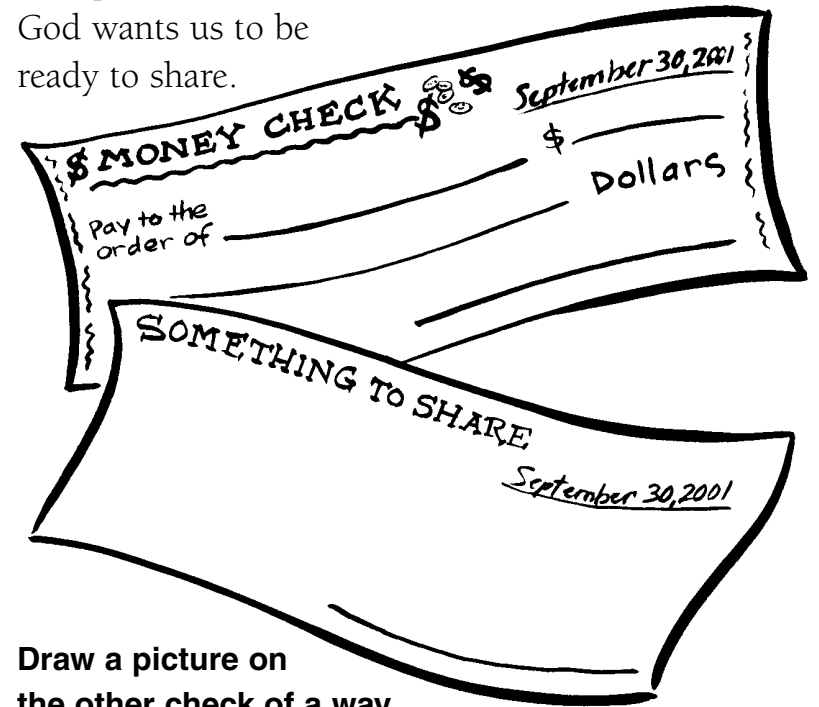


gather

Welcome to worship. Some people think that being rich means having a lot of money. How much money would that be? Fill out the top check and imagine that money is yours. How would you use it?

God provides what we need.

God wants us to be ready to share.



Draw a picture on the other check of a way to share what you have been given. Sign the check!

Hear & Celebrate

Ways to pray

Listen for this sentence in worship today:

Let us pray for the whole people of God in Christ Jesus, and for all people according to their needs.

Every time we worship together we pray for others. We say, "Hear our prayer," or "Lord, have mercy," after each part of the prayer. We pray for the world, the church, and people with needs.



Try one of these ways to pray today during the prayers of the people.

Who or what would you put in the prayers today?
Print your prayer here or ask someone to print it for you:

Draw your favorite place to pray here.





Sing to the Lord of Harvest



1 Sing to the Lord of har - vest your songs of love and praise;
2 God makes the clouds drop fat - ness, the des - erts bloom and spring,
3 Bring to this sa - cred al - tar the gifts his good-ness gave,



with joy - ful hearts and voic - es your al - le - lu - ias raise;
the hills leap up in glad - ness, the val - leys laugh and sing.
the gold - en sheaves of har - vest, the souls Christ died to save.



by him the roll - ing sea - sons in fruit - ful or - der move;
God fills them with his full - ness, all things with large in - crease,
Your hearts lay down be - fore him when at his feet you fall,



sing to the Lord of har - vest a joy - ous song of love.
and crowns the year with good - ness, with plen - ty and with peace.
and with your lives a - dore him who gave his life for all.

*“Sing to the Lord of Harvest” Text: John S. B. Monsell, 1811-1875, alt. Music: WIE
LIEBLICH IST DER MAIEN, Johann Steurlein, 1546-1613. Text and music are in public
domain.*

Into the Wild

(based on the recording by Dan Bremnes | original key: Db)

Words and Music by
Dan Bremnes, Carter Frodge
and Mike Donehey

♩ = 99

VERSE

Gm⁷

E^b2(no3)



(home.) 1. I'm a trav - el - er _ just look - ing for _ a home .
2. There's _ mys - ter - y _ wait - ing to _ un - fold. _

3

B^b

F^{sus}

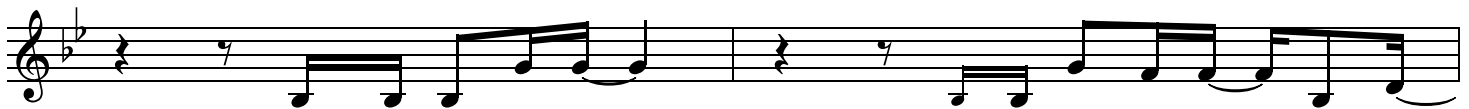


_ some - where past _ the sun _ in - to the un - known. _
_ Stir - ring in _ the deep, _ stor - ies to _ be told.

5

Gm⁷

E^b2(no3)



I'm a pris - on - er _ where I re - fuse _ to grow. .
There's _ his - to - ry _ where the can - yons o - pen wide, _

7

B^b

F^{sus}



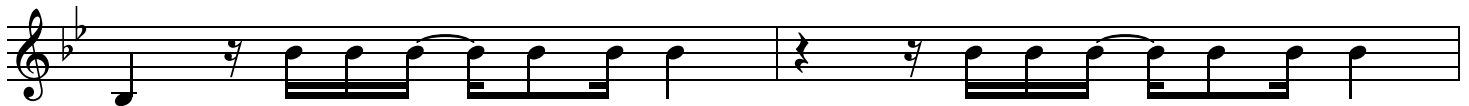
_ Take me past _ the pines _ where the fierce winds _ blow. _
_ call - ing out _ to me, _ "Come and kiss the _ sky." _

CHORUS

9

Gm⁷

E^b2



_ Run - ning in - to the wild, run - ning in - to the world,
_


CCLI Song # 7194469

© 2021 Bremnes Ventures, Inc. | Mike Curb Music | cbfrodge Music | Fair Trade Music Publishing | Remaining portion is unaffiliated

For use solely with the SongSelect® Terms of Use. All rights reserved. www.ccli.com

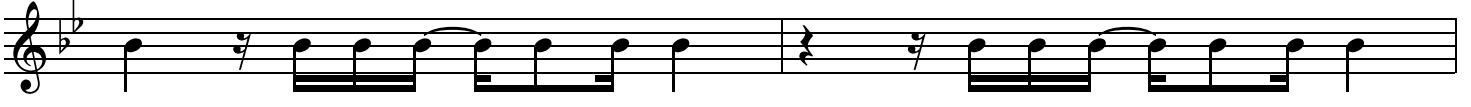
CCLI License # 2329082

11 **B \flat** **F \sharp sus**




run - ning in - to the wild, I'm _ on my way, I'm _ on my way _

13 **Gm 7** **E \flat^2** 3rd time to Coda \oplus




home. Run - ning in - to the wild, run - ning in - to the wild,

15 1. **B \flat** **F \sharp sus**



run - ning in - to the wild, I'm _ on my way, I'm _ on my way _

17 2. **B \flat** **F \sharp sus**



run - ning in - to the wild, I'm _ on my way, I'm _ on my way _

POST-CHORUS

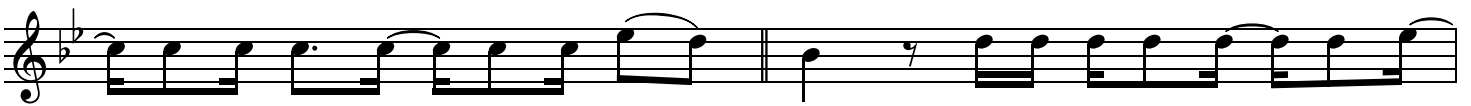
19 **Gm 7** **E \flat^2** **B \flat**



home. I'm _ on my way _ home. I'm _ on my way _ home. Run - ning in - to the wild, I'm .


BRIDGE

22 **F \sharp sus** **Gm 7**



_ on my way, I'm _ on my way _ home. Like the riv - ers to _ the sea, .

24 **E \flat^2** **B \flat** **F \sharp sus**



_ where the earth and heav - ens meet, _ chas - ing down _ an end - less des - ti - ny. _

27 Gm⁷ E^b₂

— Like the stars that fill — the night, — let the won - der fill — my eyes. .

29 B^b F^{sus} TURNAROUND Gm⁷

— I won't let — this one life pass me by. —

32 E^b₂ B^b F^{sus} D.S. al Coda

35 Coda B^b

run - ning in - to the wild, I'm —

36 F^{sus} TAG N.C. POST-CHORUS Gm⁷

— on my way, I'm — on my way, — I'm — on my way — home. I'm — on my way —

39 E^b₂ B^b

home. I'm — on my way — home. Run - ning in - to the wild, I'm —

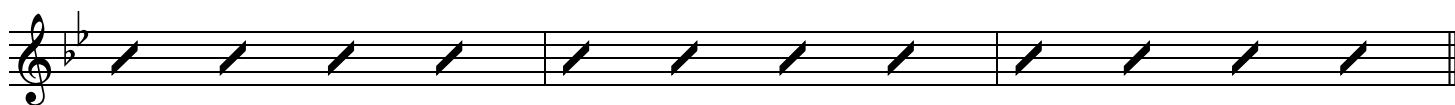
41 F^{sus} OUTRO Gm⁷

— on my way, I'm — on my way — home.

43 E \flat ²

B \flat

F^{sus}



Canticle of the Turning



1 My soul cries out with a joy - ful shout that the
2 Though I am small, my . . . God, my all, you . . .
3 From the halls of pow'r to the for - tress tow'r, not a
4 Though the na - tions rage from . . age to age, we re -



God of my heart is great, and my spir - it sings of the
work great . . things in me, and your mer - cy will last from the
stone will be left on stone. Let the king be - ware for your
mem - ber who holds us fast: God's mer - cy must de -



won - drous things that you bring to the ones who wait.
depths of the past to the end of the age to be.
jus - tice tears ev - 'ry ty - rant . . . from his throne.
liv - er us from the con - quer - or's crush - ing grasp.



You fixed your sight on your ser - vant's plight, and my
Your ver - y name puts the proud to shame, and to
The hun - gry poor shall . . weep no more, for the
This sav - ing word that our fore - bears heard is the



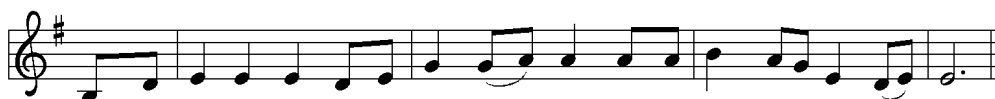
weak - ness you did not spurn, so from east to west shall my
those who would for you yearn, you will show your might, put the
food they can nev - er earn; there are ta - bles spread, ev - 'ry
prom - ise which holds us bound, till the spear and rod can be



name be blest. Could the world be a - bout to turn?
strong to flight, for the world is a - bout to turn.
mouth be fed, for the world is a - bout to turn.
crushed by God, who is turn - ing the world a - round.



Refrain
My heart shall sing of the day you bring. Let the fires of your jus - tice burn.



Wipe a - way all tears, for the dawn draws near, and the world is a - bout to turn.

"Canticle of the Turning" Text: Rory Cooney, b. 1952, based on the Magnificat. Music: STAR OF COUNTY DOWN, Irish traditional. Text: © 1990 GIA Publications, Inc. All rights reserved. Reprinted and Streamed under OneLicense.net #A-701229.