

**Welcome to worship at
New Hanover Evangelical
Lutheran Church**

**Christ the King Sunday
November 20, 2022**



Jeremiah's promise of the execution of "justice and righteousness in the land" finds ironic fulfillment in the execution of Jesus of Nazareth, the King of the Jews. It appears utterly contradictory that a king should be crucified with a criminal. This victory appears for all the world as humiliating defeat. Yet through the gate of death Jesus opens the door to paradise.

**The Rev. Scott Staub, pastor
Patricia Nyce, director of music ministry**

We love our neighbors with healing and feeding them!

**All worship can be viewed online at
newhanoverlutheran.org,
facebook.com/NewHanoverLutheranChurch
and on YouTube.**

**May your worship experience strengthen you
with God's love and grace.**

Welcome

Prelude *10,000 Reasons* J. Myrin/M. Redman
arr. by P. Bettcher
Bell Choir

"10,000 Reasons" J. Myrin/M. Redman, arr. by P. Bettcher. ©2011 and this Arr. Copyright © 2014 Shout! Publishing. All rights reserved. Streamed with permission under One License #A-701229.

Greeting

The grace of our Lord Jesus Christ, the love of God, and the communion of the Holy Spirit be with you all.

And also with you.

Prayer of the Day

Let us pray.

O God, our true life, to serve you is freedom, and to know you is unending joy. We worship you, we glorify you, we give thanks to you for your great glory. Abide with us, reign in us, and make this world into a fit habitation for your divine majesty, through Jesus Christ, our Savior and Lord, who lives and reigns with you and the Holy Spirit, one God, now and forever. **Amen.**

Gathering Hymn *Crown Him with Many Crowns* ELW #855
with the bell choir

Children's Choir *He's Got the Whole World* Traditional
arr. Aaron Miller

"He's Got the Whole World" arr. Aaron Miller. © 2011 Augsburg Fortress. All rights reserved. Streamed with permission under One License #A-701229.

Word

The Gospel speaks to us in scripture reading, preaching and song.

The Reading Jeremiah 23:1-6

¹Woe to the shepherds who destroy and scatter the sheep of my pasture! says the Lord. ²Therefore thus says the Lord, the God of Israel, concerning the shepherds who shepherd my people: It is you who have scattered my flock, and have driven them away, and you have not attended to them. So I will attend to you for your evil doings, says the Lord. ³Then I myself will gather the remnant of my flock out of all the lands where I have driven them, and I will bring them back to their fold, and they shall be fruitful and multiply. ⁴I will raise up shepherds over them who will shepherd them, and they shall not fear any longer, or be dismayed, nor shall any be missing, says the Lord.

⁵The days are surely coming, says the Lord, when I will raise up for David a righteous Branch, and he shall reign as king and deal wisely, and shall execute justice and righteousness in the land. ⁶In his days Judah will be saved and Israel will live in safety. And this is the name by which he will be called: "The Lord is our righteousness."

Gospel Reading Luke 23:33-43

The holy gospel according to Luke

Glory to you, O Lord.

³³When they came to the place that is called The Skull, they crucified Jesus there with the criminals, one on his right and one on his left. ³⁴[[Then Jesus said, "Father, forgive them; for they do not know what they are doing."]] And they cast lots to divide his clothing. ³⁵And the people stood by, watching; but the leaders scoffed at him, saying, "He saved others; let him save himself if he is the Messiah of God, his chosen one!" ³⁶The soldiers also mocked him, coming up and offering him sour wine, ³⁷and saying,

“If you are the King of the Jews, save yourself!”³⁸ There was also an inscription over him, “This is the King of the Jews.”

³⁹One of the criminals who were hanged there kept deriding him and saying, “Are you not the Messiah? Save yourself and us!”⁴⁰ But the other rebuked him, saying, “Do you not fear God, since you are under the same sentence of condemnation?”⁴¹ And we indeed have been condemned justly, for we are getting what we deserve for our deeds, but this man has done nothing wrong.”⁴² Then he said, “Jesus, remember me when you come into your kingdom.”⁴³ He replied, “Truly I tell you, today you will be with me in Paradise.”

Praise to you, O Christ.

Message

Song of the Day *Your Grace is Enough*

Diana and John Hazel, Josh Young and Emily Gates

Verse 1

Great is Your faithfulness O God
You wrestle with the sinner's restless heart
You lead us by still waters into mercy
And nothing can keep us apart

Pre-Chorus

(So) remember Your people
Remember Your children
Remember Your promise O God

Chorus 1

Your grace is enough
Your grace is enough
Your grace is enough for me

Verse 2

Great is Your love and justice God of Jacob
You use the weak to lead the strong
You lead us in the song of Your salvation
And all Your people sing along

Chorus 2

Yeah Your grace is enough
Heaven reaches out to us
Your grace is enough for me
God I sing Your grace is enough
I'm covered in Your love
Your grace is enough for me for me

"Your Grace is Enough" Words and music by Matt Maher. © 2003 Thankyou Music (Admin. by Capitol CMG Publishing. All rights reserved. Reprinted with permission under CCLI License #2329082.

Apostles' Creed

**I believe in God, the Father almighty,
creator of heaven and earth.**

**I believe in Jesus Christ, God's only Son, our Lord,
who was conceived by the Holy Spirit,
born of the virgin Mary,
suffered under Pontius Pilate,
was crucified, died, and was buried:
he descended to the dead.
On the third day he rose again;
he ascended into heaven,
he is seated at the right hand of the Father,
and he will come to judge the living and the dead.**

**I believe in the Holy Spirit, the holy catholic church,
the communion of saints, the forgiveness of sins,
the resurrection of the body,
and the life everlasting. Amen.**

Prayers of Intercession

Hear us, O God.,
Your mercy is great.

Lord's Prayer

Lord, remember us in your kingdom and teach us to pray.

**Our Father, who art in heaven,
hallowed be thy name,
thy kingdom come,
thy will be done,**

on earth as it is in heaven.
Give us this day our daily bread;
and forgive us our trespasses,
as we forgive those
who trespass against us;
and lead us not into temptation,
but deliver us from evil.
For thine is the kingdom,
and the power, and the glory,
forever and ever. Amen.

Offertory

Anthem *Come, Christians, Join to Sing* Hal H. Hopson
Chancel Choir
Vivian Specca, Percussion
Harry White, Percussion

"Come, Christians, Join to Sing" Words and music by Hal H. Hopson © 1997 MorningStar Music Publishers. All rights reserved. Streamed with permission under One License #A-701229.

Sending

God blesses us and sends us in mission to the world.

Announcements

Sending Hymn *All Hail the Power of Jesus's Name* ELW #634

Blessing

The Lord bless you and keep you.

The Lord's face shine on you with grace and mercy.

The Lord look upon you with favor and ✠ give you peace.

Amen.

Dismissal

Go in peace. Serve the Lord.

Thanks be to God.

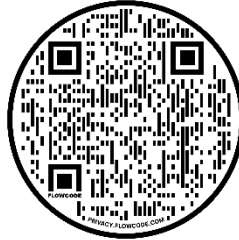
Go get'em!!!

Postlude

O Worship the King

Arr. James Curnow
Tom McHugh, trumpet
Patricia Nyce, piano

From Sundays and Seasons.com. Copyright 2022 Augsburg Fortress. All rights reserved. Reprinted by permission under Augsburg Fortress Liturgies Annual License #23853. New Revised Standard Version Bible, copyright 1989, Division of Christian Education of the National Council of the Churches of Christ in the United States of America. Used by permission. All rights reserved.



Announcements

Sound and video assistants needed for worship broadcast and live stream video. Training will be provided. For more information or to sign up, contact Pastor Scott at pastor@newhanoverlutheran.org or (610) 326-1335 ext. 1.

Sponsors are needed. Suggested donation for the bulletin is \$20 and flowers is \$35. Or, sponsor the *Word in Season* for \$35 a month. Contact Church Office Manager Susan Gutshall at (610) 326-1335 for available dates and to sign up.

Help avoid conflicts. Since activities at the church are back to normal, check in with staff before scheduling an event to be held at the church.

Susan Gutshall, Office Manager, will be on personal leave from Oct 3rd until further notice. Please send messages as usual to her email and voice mail. Volunteers and staff are monitoring correspondence at susan.gutshall@newhanoverlutheran.org, and 610 326-1335.

Office hours will be modified to a Monday through Friday mornings from 9 AM to 12:00 PM, Monday afternoon from 1:30 to 3 PM, and Thursday Afternoon from 1 to 4 PM.

Announcements for the bulletin are due Mondays by noon.

Appointments for facility access and meeting with staff are strongly recommended.

Peace and keep Susan in your prayers.

Today

The bulletin is presented to the glory of God in celebration of their wedding anniversary by Steve and Faye Weidner.

The flowers are presented to the glory of God in celebration of their wedding anniversary by Scott and Georgann Geiser.

Serving Today Head Usher: Marty Hauser; Ushers: Ron Fegley and Steve Weidner; Lector: Carol Estes; Children's Sermon: Donna Kehs, Acolyte: Hannah Waltermyer

Next Sunday Head Usher: Jim Gross; Ushers: George Trowbridge and Elfriede Ilik; Lector: Barbara Noecker; Children's Sermon: Nikki Young, Acolyte: Norm Hunsberger

Altar Guild Serving this Month Jean Moser, Jane Johnson, Jo Anne Wirt

Calendar

Worship Service – Today, 9:00 AM, sanctuary and online

Food Drop Off – Today, 9:00 – 10:00 AM, kitchen

Food Delivery Pickup – Today, 10:00 AM, portico

J.A.M. (Jesus and Me) – Today, 10:05 – 11:05 AM, room 1

Adult Forum: Politics & Religion – Today, 10:15 – 11:05 AM, room 33

Rejoicing Spirits – Today, 2:30 PM, sanctuary

AARP – Monday, 11:00 AM, room 1

Prayer Ministry – Monday, 1:15 PM, sanctuary

Scout Pie Fundraiser Pickup – Tuesday, 12:00 – 7:30 PM, room 1

Boy Scouts – Tuesday, 6:30 – 8:00 PM, room 1

Scout Pie Fundraiser Pickup – Wednesday, 10:00 – 11:00 AM, room 1

Food Drop Off – Wednesday, 1:00 – 2:00 PM, kitchen

Food Delivery Pickup – Wednesday, 2:00 PM, portico

12 Step – Wednesday, 6:00 – 7:00 PM, room 32

Thanksgiving Day Service – Thursday, 9:00 AM, sanctuary and online

Worship Service – Next Sunday, 9:00 AM sanctuary and online

Food Drop Off – Next Sunday, 9:00 – 10:00 AM, kitchen

Food Delivery Pickup – Next Sunday, 10:00 AM, portico

J.A.M. (Jesus and Me) – Next Sunday, 10:05 – 11:05 AM, room 1 (fellowship hall)

Adult Forum: Politics & Religion – Next Sunday, 10:15 – 11:05 AM, room 33

Upcoming Events

Constant Contact is a weekly email offering events and worship news. Did you get an email from Constant Contact this week? If not, don't miss out! Sign up by calling the church at (610) 326 1335 or emailing cc-admin@newhanoverlutheran.org.

Politics and Religion Bible Study - Sundays at 10:15 AM in room 33. Now that I got your attention. Join me for a weekly public forum of how we as a people can share the wisdom of the Bible to create an atmosphere where listening, loving and helping one another is a priority, and power and dominance are not a platform for public forums and discussions. The Readings and discussions will be posted on our website, and printed copies will be available each Sunday in Room 33 at 10:15 AM.

Choir Rehearsals: Chancel Choir rehearses Wednesdays, 7:00 – 8:15 PM in the choir room (room 15). **Children's Choir** rehearses Wednesdays, 6:30 – 7:00 PM in the choir room. Interested in joining the Chancel Choir or Children's Choir? Contact Director of Music Ministry Patricia Nyce for more information. **Bell Choir** rehearses on Thursdays, 6:15 – 7:30 PM in the choir room. For more information about the bell choir program, contact Bell Choir Director Barb Eisenhart.

Thursdays at Ten, our midweek adult faith formation gathering, meets each Thursday from 10 - 11:30 AM in room 33. This informal discussion/study group will explore “**Fierce Women of the Bible.**” There were some sassy women back then! Both women and men are invited to journey back to biblical times to learn more about these “lasses” and how some things haven’t changed. Look for more course details in the newsletter. Contact Deacon Carol with any questions. And feel free to bring a friend! Newcomers always welcome! **Please note:** there will be no class this coming week due to the holiday

Thanksgiving Pie Fundraising Sale Pack 367 and Troops 367 B & G are holding their annual Thanksgiving Pie Fundraising Sale. **If you ordered pies, you may pick-up at the church Tuesday night 11/22 from 5:30 - 7:30 pm or Wednesday morning 10-11 am.** Contact Jen Van Dyke (484-942-9802 or jtra367@yahoo.com) with questions.

The congregation is invited to participate in the PJ Project during the month of November. Flutter is hosting this project to provide new pajamas (adult size small - XL) for teen boys and girls in the local area. Donations must be in by **November 20th**. A collection bin is in the Welcome Center.

Hoagie Sales are Back! The Cub Scouts and Scouts BSA Troops are holding their next Hoagie Sale fundraiser on Saturday, December 10. FRESH hand-made hoagies will be made by the Scouts. Choose from Italian or Turkey hoagies. The Italian hoagies consist of ham, salami, provolone cheese, lettuce, and tomatoes. The turkey hoagies include turkey, provolone cheese, lettuce, and tomatoes. Onions may be requested and pepper spread is also available on the side by request. The cost is \$7 each. Proceeds will help the Scouts defray their cost of attending Summer Camp and other costs of Scouting, after a 10% goodwill donation to NHELIC; last year \$233 was donated from Hoagie Fundraisers. Orders can be picked up at the church between 10:30 a.m. and 11:00 a.m. on Saturday, December 10. **The deadline to order is Sunday, November 27.** An order form can be found on the desk in the Welcome Center. Orders may also be submitted

online by going to 367hoagies.com and completing the form there. Please pay when the hoagies are picked up.

Flutter will be having a lock-in at the church on **Saturday, December 3rd**. Youth can arrive anytime after 6:30pm and will be "locked in" until church the next morning. Please see the email that was sent out (or reach out to Jen Boyer or Lindsey Waltermeyer) for more details.

Christmas Craft Party Join us for the Christmas craft party on **Saturday, December 3rd** from 10am-1pm. Crafts and games will go from 10am-12pm and lunch around noon Please sign up if you will be attending. We want to be sure we have enough crafts and food for everyone! There is no cost for this event, as it is being covered by a Thrivent Action Team. However, in lieu of a cost we are asking you to bring personal care items (toothpaste, toothbrush, hand lotion, Chapstick, tissue packs etc. and wrapped snacks as part of a service project for this event! Sign up in the Welcome Center or at

<https://www.signupgenius.com/go/10c0f4eafac2caaf4c16-christmas1>

Angel Tree Our church's generosity helps to make the holidays bright for so many in OUR community each year. Our Angel Tree is up and adorned with tags with gift ideas. This year we are once again supporting the children at Gemma and the St James Lutheran Church Shining Star Program. Gemma was formed in 2019 when Silver Springs-Martin Lutheran School and the Village united to operate together serving children and families in the greater Philadelphia region. Their similar histories, strongly rooted in Lutheran and Presbyterian faith, date back to the 19th century when they founded orphanages in Philadelphia. The Shining Star program helps provide food to families during the holiday season. (\$25 Giant gift cards) **CHOOSE a TAG, return UNWRAPPED gift by DECEMBER 4th**. Thank you one and all.

For questions ask Vicki Mutter, Marlene Hansley, or Rosalie Lisa.

The church book club will be meeting Tuesday, December 6th at 6:30 PM at The Grind to discuss The Book of Longings by Sue

Monk Kidd. All are welcome to attend! To stay up to date with what's happening, join the group's Facebook page, NHELBC Book Club. If you aren't on Facebook, contact Sharon Tracey at LBD36@aol.com for information.

Paint day – DATE CHANGE (Instructor had a family event come up). Back by popular demand another Paint Day Party. Please join us on **Sunday, December 11th** from 6-8 pm. This time we are going to go to Amy's studio – Amy's Art Shack, 2210 Hendricks Road, Pennsburg. If you are interested we will meet at PC Pub/Pizza Como at 4:15 for dinner and fellowship before. RSVP to Nikki Young or on the sign up genius <https://www.signupgenius.com/go/10c0f4eafac2caaf4c16-christmas> This event is \$35/person. (Dinner is on your own) Save the date!

Seniors Ministry Christmas Luncheon and Program – Thursday, December 15, 12 noon. Celebrate the season with “**The Carols of Christmas**”. Joining us will be our former Director of Music Priscilla Landis to lead us in a festive time of carol singing and a sharing of the background of some of our beloved Christmas carols. We'll begin with a delicious lunch of homemade soup and sandwiches prepared by Chef Chris. We're asking folks to bring a Christmas treat to share for dessert. To help with meal planning **please RSVP by Friday, December 9**. A sign-up sheet is on the desk in the Welcome Center or you can contact Deacon Carol at carol.detweiler@newhanoverlutheran.org or leave a message on the church phone. And invite a friend or two!

You Can Help

Poinsettias add beauty to sanctuary. Help to decorate the sanctuary this Christmas with poinsettias. The Altar Guild will order plants in 6.5” pots with five blooms. The suggested donation is \$10.50 per plant. Plants may be sponsored in memory of (for someone who has passed away) or in honor of (someone who is living). The sponsored plants will be listed in the Christmas Eve bulletins.

To sponsor one or more plants, **complete a Poinsettia Order form (**at the back of the bulletin**)** and return the form along with payment (checks made payable to NHELCC) to the church. Be sure to include the number of plants you would like. Also, be sure to mark the order form if you will pick up your plants or if you wish to have the plant given to a homebound member. Plants may be picked up **AFTER** the 7:00 PM Christmas Eve Service or the 9:00 AM service on Christmas Day. Please call the church office if you need additional forms. Forms and payment should be mailed to the church office, placed in the offering plate, or dropped off at the mail slot next to the Fellowship Hall entrance. **Orders are due by November 27, 2022.**

Looking for volunteers to help during the church service: Ushers, Lectors, Children's Sermons, and Acolytes. Please contact Faye Weidner if you are interested in serving at omiweidner@gmail.com or 484-929-5958

A Capital Funds Campaign is underway. Help NHELCC raise \$247,500 for the HVAC and AVEL systems. Specially marked envelopes are available on the desk in the welcome center for your contribution. For more information, contact the church office at (610) 326-1335.

Food Ministry

More than 100,000 meals have been delivered! NHELCC's Loaves & Fishes Food Ministry is changing lives. And, you can be a part of the team. 1) You can donate food. Drop off your donation on Wednesdays between 1 – 2 PM and Sundays between 9 – 10 AM. Items most needed include: hamburger, chicken (thighs and breast meat), pasta (ziti, elbows, bowties), cheese (mozzarella, cheddar, parmesan), potatoes, fresh fruit (apples, oranges, bananas) and eggs. 2) Donate money through Thrivent Gift Cards, place monetary donations in the offering plate or mail to the church. 3) Deliver meals. Sign up at <https://www.newhanoverlutheran.org/loaves-fishes-food-ministry/>.

Spiritual Renewal

The *Word in Season* daily devotion books October - December are available in the welcome center and information box located outside by the Sunday school doors. The books are sponsored to the glory of God and in honor of Stacey's mother, Sally Kohl, by Stacey and Todd Rothermel.

Do you know someone who could use a **prayer shawl** to help bring comfort, healing and good thoughts? If so contact Deacon Carol or Pastor Scott and they'll see that one is made available. And...**please prayerfully consider:** the requests for our prayer shawls keep coming in. To make sure we will always have a shawl available when needed we could use some additional knitters to help with this important ministry. Please contact Deacon Carol if interested in doing this. Supplies and instructions are available in the library located off of Fellowship Hall, in a bookcase close to the door.

Need a prayer lifted up? The **NHELC Prayer Chain Ministry** is here for you. All information remains confidential. To request a prayer, contact Deacon Carol at cdetweiler01@comcast.net or call the church office (610-326-1335) to leave her a voice mail. Your prayers will be delivered! Also, you can contact Deacon Carol to update circumstances or have a name removed from the Prayer Chain.

Prayer Warriors Wanted You are invited to join the warriors on Monday at 1:15 PM in the sanctuary. Participants join in a brief devotion and then pray together. They give thanks and then lift up in prayers neighbors both near and far. See Donna Kehs or Marsha Staub if you have any questions.

A **Seniors Suggestion Box** is now available on the desk in the Welcome Center. NHELC Seniors (folks in their 60's on up) are invited to use the slips provided and write down any ideas, concerns, needs they may have for our Senior's Ministry. Can be anything ranging from speakers/topics, fun events, faith formation needs, etc. We want to hear from you!

Thank you

Lynn and Ron Fegley would like to thank everyone who sent cards, text messages and shared stories following the passing of their father/father-in-law, George Freyer. We greatly appreciate your heartfelt sympathy and kindness and feel so blessed to have such a loving church family.

Dear Pastor Scott,

My name is Joe & on behalf of my 12 roommates we thank you & your staff for the food donations! Your chef, your wife, yourself & volunteers put a lot of thought & care in making our lives easier! It's nice to have a home cooked meal & not worry where our next meal is coming from. Thank you we all appreciate it. God bless you & your family.

Remember in your prayers

Requests

Trevor Martin, Toni Rath, Katy Mahon-Miller, Matt Hall, Luann Hanley, Scot Smale, Carol Estes, William Trotter, Kathy Kane, Phil Underkoffler, Maxwell Girard, Pat Fryer, Jean Renninger, Kathy Campos, Richard Norris, Pr. Kork Moyer, Betty Lou Shadle, Julia Hauck, Tony Mancini, Raul Castro, Amy LeVan, Jeffrey Kunsch, Braydon Kline, Edwin Sugita, Wilma Lahr, Robert Tadley, Jim Price, Melissa, Bernadette Phillips, Mary Lou, Doug Weaver, Joan Wagner, Jaden Mahlbauer, Robert Ganovsky, Dorothy Bingaman, Emily Ocelus, Gates family, Eric and Wendy Hess, Sue Care, Herman Richard, Deb Matthews, Marceline, Anne Eshleman, Daniel Johnson, Gwen Grant, Chris Fatzinger, Hank Droneberg, Pena family, Kim Frain, Ken Jacob, Jen Perez, Frank D., Pam Helfrich, Barb and Tom Faust, Andy Van Dyke, Janet, Jerry Dotterer, Feryl Stein, Laurie Scoggins, Pam Abbott, Holli Muffler, Louise Karns, Mary Van Dyke, Pr. Jennifer Phelps, Jessica Trout, Denny Smith, Verdi Smith, Mabel Gaugler

Peace for the violence in our area and nationally

Long-term

Heather James, Sarah Bowman, Keeley Staples, Logan Conley,

Sally Kohl, Tina Farrell, Carol Buchholtz Yost

Shut-in

Penny Frymoyer

Grieving

Family and friends of Marcia Renninger-Dey, Wayne Sloan, George Freyer (Lynn & Ron Fegley) Leon Houp, Francis Wilson (Pastor Scott & Marsha), Laura Wise (Jeff & Sharon Wise)

Military

Shawn Dietz, Michael McHugh, Kevin Dugan, Jason Bernhard, Craig Geiser, Patrick Mathias, Steven Kane, William Zearfoss, Will Wilson V, Milton Jack Repa, Megan Fricker, Kyle Woods

New Hanover Evangelical Lutheran Church

2941 Lutheran Road
Gilbertsville, PA 19525

Office Hours: Monday – Friday, 9 AM – 3 PM

Call for an appointment. (610) 326-1335

Contact Information

Pastor, The Rev. Scott Staub

pastor@newhanoverlutheran.org

Director of Children, Family & Youth Ministry, Nikki Young

nikki.young@newhanoverlutheran.org

Church Office Manager, Susan Gutshall

susan.gutshall@newhanoverlutheran.org

Director of Music Ministry, Patricia Nyce

patricia.nyce@newhanoverlutheran.org

Food Ministry Director, Chris Fatzinger

Cfatzinger@chris-cooks.com

Director of Senior Faith Formation, Deacon Carol N. Detweiler

carol.detweiler@newhanoverlutheran.org

Bell Choir Director, Barbara Eisenhart

eisenbarb@aol.com

Bookkeeper, Maria Boyer

mariaboyer@comcast.net

Cemetery

Bill Bauer, rwbauer7@gmail.com

Norm Hunsberger, namron29@comcast.net

Christmas Poinsettia Order Form

Orders due by November 27, 2022

Please indicate below how you desire the names to appear on the sponsor page in the Christmas Eve bulletins. This form along with your payment is due in the church office by **Sunday, November 27, 2022.**

("In memory of" if deceased; "In honor of" if living)

In memory/honor of: _____ by _____
(Circle One) *(Please print)* *(Please print)*

In memory/honor of: _____ by _____
∞ (Circle One) *(Please print)* *(Please print)*

In memory/honor of: _____ by _____
(Circle One) *(Please print)* *(Please print)*

Cost per 5 bloom, 6.5" potted plant is \$10.50. Amount Enclosed \$ _____

Place this form along with your payment in an envelope and return to the church office or place in the offering plate. Please make checks payable to **NHEL.C**. Order deadline is **November 27, 2022.**

(Check one)

I will pick up my poinsettia(s) _____ **Please deliver to a homebound member** _____

Plants may be picked up after the 7:00 PM Christmas Eve service or the 9:00 AM service on Christmas Day.

Financial Record

OFFERING	Oct 2022 Contributions	Jan-Oct 2022 Total Contributions	Approved Budget through Oct 2022	% of Budget through Oct 2022
Envelope Offering	\$15,335	\$143,042	\$143,333	100%
Simply Giving Offering	\$9,482	\$100,270	\$111,250	90%
Loose Offering Offering	\$660	\$3,588	\$4,167	86%
<i>Total Offerings</i>	<i>\$25,477</i>	<i>\$246,900</i>	<i>\$258,750</i>	<i>95%</i>
DESIGNATED CONTRIBUTIONS				
Fuel Oil Contributions	\$425	\$4,462	\$7,500	59%
Bulletin Contributions	\$60	\$305	\$1,000	31%
Flower Contributions	\$285	\$2,293	\$2,500	92%
Food Ministry/Garden of Hope Contributions	\$7,316	\$51,294	\$45,833	112%
Peer Support Ministry Contributions	\$1,224	\$11,421	\$3,333	343%
GRANTS				
Peer Support Ministry Grants	\$0	\$0	\$6,250	0%
Food Ministry/Garden of Hope Grants	\$0	\$43,930	\$12,500	351%
CAPITAL CAMPAIGNS				
HVAC Project Contributions	\$1,438	\$66,316	\$167,500	40%
AVEL(1) Project Contributions	\$2,263	\$28,283	\$80,000	35%

(1) AVEL = Audio-Visual, Electric & Lighting project

Send

A hymnbook hunt

♪ Today is the last Sunday of the church year. What is the last hymn in your hymnbook?

Hymn number _____

Title _____

♪ Print the hymn number for one of today's hymns.

Hymn number _____

♪ Find a hymn that uses Christ or King in the title.

Hymn number _____

Title _____

Draw a crown here if it's a song you will sing today:

♪ Jesus is with us from beginning to end. What are the last words in the last song you sing today in worship?

This week

Find the book of Matthew in your Bible. Starting next Sunday, our gospel readings will come from this book.



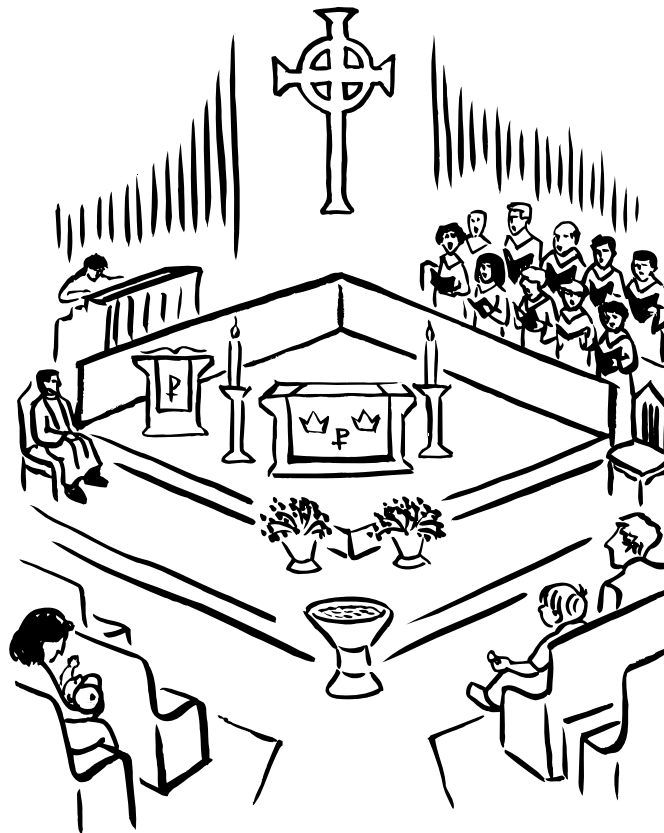
Kids Celebrate

Christ the King / Lectionary 34



gather

Welcome to worship. Does today feel like the end of the year? We celebrate Christ the King Sunday today, the last Sunday of the church year. We know that Jesus Christ always has been and always will be king of all.



Circle everything you see in this picture that begins with the same sound as *Christ* and *king*.

Christ the servant-king

Jesus didn't wear a gold crown like some kings. Jesus cared for the needs of many people by teaching and serving.



Plan a way your family can serve others together.



We worship you, Jesus, as our servant-king. Amen

Holy, holy, holy Lord, God of power and might: heaven and earth are full of your glory.

When do you hear these words in worship?

Draw a royal crown above each of these pictures of Jesus.



Your Grace Is Enough

Words and Music by
Matt Maher

♩ = 116 VERSE

G

G/B

C



1. Great is __ Your faith - ful - ness, _ O God; __
2. Great is __ Your love __ and jus - tice, God __ of Ja - cob;

5

Em

G/B

C



You wres - tle with __ the sin - ner's rest - less heart. _
You use __ the weak __ to lead __ the strong. _

9

G

G/B

C



You lead _ us by __ still wa - ters in - to mer - cy
You lead _ us in __ the song _ of Your _ sal - va - tion,

13

Em

G/B

C



and noth - ing can __ keep us __ a - part. __ So, re -
and all __ Your peo - ple sing _ a - long. _

PRE-CHORUS

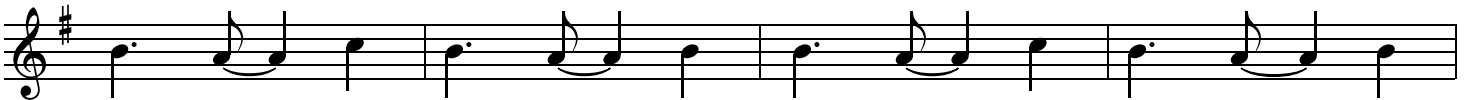
17

Am

G/B

Cmaj⁷

D



-mem - ber __ Your peo - ple, __ re - mem - ber __ Your chil - dren, __ re -

21

Em

D

G/B

C



-mem - ber __ Your prom - ise __ O __ God. _____ Your

CHORUS 1

25 G D Em⁷ C

grace is e - nough, _ Your grace is e - nough _ Your

29 G D C

grace is e - nough, _ for _ me. _

33 PRE-CHORUS Am G/B

_ Your _ Re - mem - ber _ Your peo - ple, _ re -

37 Cmaj⁷ D Em D/F# G

-mem - ber _ Your chil - dren, _ re - mem - ber _ Your prom - ise _ O _ God. .

CHORUS 1

41 C G D

_ Your grace is e - nough, _ Your

45 Em⁷ C G D

grace is e - nough _ Your grace is e - nough, _ for _ me. .

CHORUS 2

49 C G D

Yeah, Your grace is e - nough; heav - en reach -
 grace is e - nough; I'm cov -

53 Em⁷ C G D

- es out _ to us. ____ Your grace is e - nough _ for ____ me. .
 - ered in _ Your love. _ Your grace is e - nough _ for ____ me, .

57 1. C 2. C

_ God, _ I sing: _ Your _____ for _____ me. _

ENDING

61 G D^{sus} Em⁷ C

65 G D^{sus}

67 Em⁷ C G