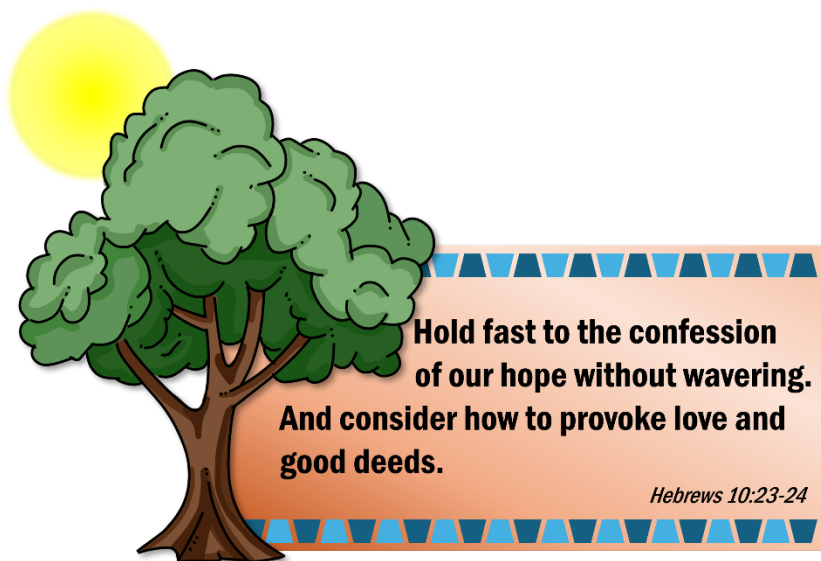


Welcome to worship at
New Hanover Evangelical Lutheran Church
Twenty-sixth Sunday after Pentecost
November 17, 2024



November begins with All Saints Day and ends in or near Advent, when we anticipate Christ's coming again. It is fitting, then, that the readings today tell of the final resurrection and the end time. In the turmoil of hope, fear, and disbelief that these predictions provoke in us, Hebrews sounds a note of confident trust. Christ makes a way for us where there is no way, and we walk it confidently, our hearts and bodies washed in baptismal water, trusting the one who has promised forgiveness. The more we see the last day approaching, the more important it is to meet together to provoke one another to love.

**The Rev. Wayne Moritz, guest preacher
Nicole Young, seminarian minister
Patricia Nyce, director of music ministry
Lindsey Waltermyer, Grace and KFC band leader**

We love our neighbors with healing and feeding them!

**All worship can be viewed online at
newhanoverlutheran.org
[facebook.com/NewHanoverLutheranChurch](https://www.facebook.com/NewHanoverLutheranChurch)
and on YouTube.**

**May your worship experience strengthen you
with God's love and grace.**

Prelude

Welcome

Pastor Wayne

Please rise as you are able.

Gathering Hymn

We Praise You, O God

ELW #870

Call to Worship

Pastor Wayne

In the name of the Father, and of the ✠ Son, and of the Holy Spirit.

Amen.

Prayer of the Day

Pastor Wayne

The grace of our Lord Jesus Christ, the love of God, and the communion of the Holy Spirit be with you all. **And also with you.**

Let us pray.

Almighty God, your sovereign purpose brings salvation to birth.
Give us faith to be steadfast amid the tumults of this world,
trusting that your kingdom comes and your will is done through
your Son, Jesus Christ, our Savior and Lord. **Amen.**

Centering Song

Get Down KFC (Kids for Christ) Band

Lavishly our lives are wasted

Humbleness is left untasted

You can't live your life

To please yourself

That's a tip from my mistake

Exactly what it doesn't take
To win you've gotta come
In last place
To live your life
You've got to lose it
And all the losers get a crown

Chorus:

I get down He lifts me up. I get down He lifts me up
I get down He lifts me up. I get down

All I need's another day
Where I can't seem to get away
From the many things
That drag me down
I'm sure you've had a day like me
When nothin' seems to set you free
From burdens you can't carry all alone yeah
In your weakness, He is stronger
In your darkness, He shines through
When you're cryin', He's your comfort
When you're all alone, He's carryin' you

Chorus 2x

Bridge:

This valley is so deep
I can barely see the sun
I cry out for mercy Lord
And You lift me up again

Chorus 2x

Interlude:

I get down I get down
I get down I get down

Chorus 2x

Ending (spoken):

Every time I'm down the Lord lifts me up

"Get Down" Words and music by Ben Cissell, Bob Herdman, Mark Stuart, Tyler Burkum and Will McGinniss. © 1999 Flicker USA Publishing; Up In The Mix Music. Admin. by Capitol CMG Publishing. All rights reserved. Streamed with permission under CCLI License #2329082.

Please be seated.

Children's Message

Hayley Quigley

First Reading Hebrews 10:11-14, 19-25 Kayleigh Urbassik

A reading from the book of Hebrews

¹¹ Every priest stands day after day at his service, offering again and again the same sacrifices that can never take away sins. ¹² But when Christ had offered for all time a single sacrifice for sins, “he sat down at the right hand of God,” ¹³ and since then has been waiting “until his enemies would be made a footstool for his feet.” ¹⁴ For by a single offering he has perfected for all time those who are sanctified.

¹⁹ Therefore, my friends, since we have confidence to enter the sanctuary by the blood of Jesus, ²⁰ by the new and living way that he opened for us through the curtain (that is, through his flesh), ²¹ and since we have a great priest over the house of God, ²² let us approach with a true heart in full assurance of faith, with our hearts sprinkled clean from an evil conscience and our bodies washed with pure water. ²³ Let us hold fast to the confession of our hope without wavering, for he who has promised is faithful. ²⁴ And let us consider how to provoke one another to love and good deeds, ²⁵ not neglecting to meet together, as is the habit of some, but encouraging one another, and all the more as you see the Day approaching.

Here ends the reading.

Please rise as you are able.

Gospel Acclamation



Al - le-lu - ia! Lord and Sav - ior: o - pen now your sav - ing word.



Let it burn like fire with - in us; speak un - til our hearts are stirred.



Al - le-lu - ia! Lord, we sing for the good news that you bring.

The holy gospel according to Mark

Glory to you, O Lord.

¹ As [Jesus] came out of the temple, one of his disciples said to him, “Look, Teacher, what large stones and what large buildings!”

² Then Jesus asked him, “Do you see these great buildings? Not one stone will be left here upon another; all will be thrown down.”

³ When he was sitting on the Mount of Olives opposite the temple, Peter, James, John, and Andrew asked him privately, ⁴ “Tell us, when will this be, and what will be the sign that all these things are about to be accomplished?” ⁵ Then Jesus began to say to them, “Beware that no one leads you astray. ⁶ Many will come in my name and say, ‘I am he!’ and they will lead many astray. ⁷ When you hear of wars and rumors of wars, do not be alarmed; this must take place, but the end is still to come. ⁸ For nation will rise against nation, and kingdom against kingdom; there will be earthquakes in various places; there will be famines. This is but the beginning of the birth pangs.”

The gospel of the Lord.

Praise to you, O Christ.

Please be seated.

Message

Pastor Wayne

A moment of silence for reflection

Please rise as you are able.

Song of the Day *Whom Shall I Fear (God of Angel Armies)*

KFC (Kids for Christ) Band

You hear me when I call

You are my morning song

Though darkness fills the night

It cannot hide the light

Whom shall I fear

You crush the enemy underneath my feet

You are my sword and shield

Though troubles linger still

Whom shall I fear

Chorus:

I know Who goes before me
I know Who stands behind
The God of angel armies is always by my side
The One who reigns forever
He is a friend of mine
The God of angel armies is always by my side

My strength is in Your name
For You alone can save
You will deliver me
Yours is the victory
Whom shall I fear
Whom shall I fear

Chorus

Bridge:

And nothing formed against me shall stand
You hold the whole world in Your hands
I'm holding on to Your promises
You are faithful
You are faithful (You are faithful)
(Repeat Bridge)

Chorus 2x

"Whom Shall I Fear (God of Angel Armies)" Words and music by Chris Tomlin, Ed Cash and Scott Cash. © 2012 Capitol CMG Paragon; McTyeire Music; S. D. G. Publishing; Twelve Lions Music; Worship Together Music. All rights reserved. Streamed with permission under CCLI License #2329082.

Prayers of Intercession
Merciful God
receive our prayer.

Nikki Young

The Lord's Prayer
Lord, remember us in your kingdom and teach us to pray.

Nikki Young

**Our Father, who art in heaven,
hallowed be thy name,
thy kingdom come,
thy will be done, on earth as it is in heaven.
Give us this day our daily bread;**

**and forgive us our trespasses,
as we forgive those who trespass against us;
and lead us not into temptation,
but deliver us from evil.
For thine is the kingdom,
and the power, and the glory,
forever and ever. Amen.**

Peace

Nikki Young

Since we are justified by faith, we have peace with God through our Lord Jesus Christ. The peace of Christ be with you always.

And also with you.

Please share a sign of peace with your neighbors.

The people give a sign of peace to each other.

Please be seated.

Offertory

Choir Anthem *Come, Christians, Join to Sing* Chancel Choir
Josh Young and Sam Young, percussion

"Come, Christians, Join to Sing" by Hal H. Hopson. © 1997 MorningStar Music Publishers. All rights reserved. Streamed with permission under One License #A-701229.

Doxology *Create in Me a Clean Heart* ELW #186
The offering is brought forward for a blessing.

Announcements

Nikki Young

Please rise as you are able.

Sending Hymn *My Faith Looks Up to Thee* ELW #759

Dismissal

Nikki Young

Go in peace. Serve the Lord.

Thanks be to God.

Go get'em!!!

Postlude

Majestic Largo

Ellen Jane Lorenz

From Sundays and Seasons.com. Copyright 2024 Augsburg Fortress. All rights reserved. Reprinted by permission under Augsburg Fortress Liturgies Annual License #23853. New Revised Standard Version Bible, copyright 1989, Division of Christian Education of the National Council of the Churches of Christ in the United States of America. Used with permission. All rights reserved.

Announcements

Today

We welcome Pastor Wayne Moritz to the worship service this morning. Pastor Wayne will be preaching while Pastor Scott is on vacation. In the event of a pastoral emergency, contact Nikki Young at the church office, 610-326-1335.

This morning, the youth praise band, KFC (Kids for Christ) is leading the congregation in the praise songs. KFC is open to all youth in grades 6-12. Rehearsals are on Sunday mornings at 11:00 AM (the last 15 minutes of JAM). Reach out to Lindsey Waltermyer if you would like more information!

The bulletin is sponsored to the glory of God and in memory for Transgender Day of Remembrance by Janet Psota.

The flowers are sponsored to the glory of God and in memory of Bill Lowry by Sue and children.

Serving Today Head Usher: Todd Rothermel, Usher: Stacey Rothermel, Lector: Kayleigh Urbassik, Children's Sermon: Hayley Quigley, Acolyte: Ava Hubley

Next Sunday Head Usher: Jim Gross, Usher: Doug Senne, Lector: Maddie Hansley, Children's Sermon: Ariel Hansley, Acolyte: Alivia Singley

Altar Guild members serving this month: Jean Moser, Jane Johnson, Jo Anne Wirt and Yvonne Peto

The Nursery room is located between the Welcome Center and the Fellowship Hall. Parents are welcome to use the room during worship services as needed. The room provides for a comfortable play area in a joyful environment; toys and books are included. The room has access to a changing room and a private nursing room next door.

Doors leading to fellowship hall and the education wing remain locked during the worship service for the safety of all.

Calendar

Worship Service – Today, 9:00 AM, sanctuary and online

Food Drop Off – Today, 9:00 – 10:00 AM, kitchen

Food Delivery Pickup – Today, 10:00 AM, portico

J.A.M. – Today, 10:15 AM, room 21

Kids for Christ Rehearsal – Today, 11:00 AM, sanctuary

Praise Band Rehearsal – Today, 11:15 AM, sanctuary

Rejoicing Spirits – Today, 2:30 – 4:00 PM, room 1 and sanctuary

AARP – Monday, 11:00 AM, room 1

Prayer Ministry – Monday, 1:15 PM, sanctuary

Cub Scout Pack 367 – Monday, 6:30 – 8:30 PM, rooms 1, 14, 21-25, 27, 30, 33

Family Learning Center Information – Monday, 6:30 PM, sanctuary

Cemetery – Monday, 7:00 PM, room 29

Survive the Holidays – Tuesday, 10:00 AM, room 33

Scouts BSA Troop 367 – Tuesday, 6:30 – 8:15 PM, room 1

Food Drop Off – Wednesday, 1:00 – 2:00 PM, kitchen

Food Delivery Pickup – Wednesday, 1:30 PM, portico

Loaves & Fishes Dinner – Wednesday, 5:45 PM, rooms 1, 11

Addiction 12 Step – Wednesday, 6:00 – 7:00 PM, room 32

Chancel Choir – Wednesday, 6:30 – 7:45 PM, room 15

Addiction 12 Step – Thursday, 6:00 – 7:00 PM, room 32

Handbell Choir Rehearsal – Thursday, 6:15 – 7:30 PM, room 15

Council – 7:00 PM, room 33

Scout District Roundtable – Thursday, 7:30 – 9:00 PM, room 1

Ordinary Holiness Yoga – Saturday, 8:30 – 9:30 AM, room 21

Worship Service – Next Sunday, 9:00 AM, sanctuary and online

Food Drop Off – Next Sunday, 9:00 – 10:00 AM, kitchen

Food Delivery Pickup – Next Sunday, 10:00 AM, portico

J.A.M. – Next Sunday, 10:15 AM, room 21

Reconciling in Christ Presentation – 10:15 AM, room 1

Kids for Christ Rehearsal – Next Sunday, 11:00 AM, sanctuary

Praise Band Rehearsal – Next Sunday, 11:15 AM, sanctuary

Rejoicing Spirits worship service This ministry supports people with intellectual and developmental disabilities, providing a

meaningful worship experience for people of all abilities. All are welcome. For more information, contact Donna Kehs or Stacey Rothermel.

“Ordinary Holiness” Yoga Class for beginners and advanced will meet on Saturday from 8:30 – 9:30 AM. Class will focus on breathwork, mindfulness, gentle flow of movement to stretch and strengthen. Participants will journey inward to find holiness in the ordinary, peace through practicing being in the present moment. Anyone age 13 years and up (13–17-year-olds should be accompanied by an adult) can join. Classes are free-will donation-based. Pay in cash or by check (payable to NHELCC, note: food ministry). For more information and to sign up, contact Leslie Gates.

Upcoming Congregational Meeting Schedule

2025 Budget Informational Meetings

- **Sunday, December 1st**
10:00 AM in fellowship hall
- **Wednesday, December 4th**
6:30 PM in fellowship hall

Learning Center Informational Meetings

- **Monday, December 2nd**
6:30 PM in sanctuary
- **Saturday, December 7th**
9:00 AM in fellowship hall

Special Congregational Meeting

- **Sunday, December 8th**
10:00 AM in sanctuary
a letter will be mailed/emailed prior to meeting with agenda and attachments

Upcoming Events

Thanksgiving Eve Service will be held at NHELCC on Wednesday, November 27th, at 7:00 PM. Members of the community and daughter churches are invited. A community choir will sing the

anthem, *Accept Our Thanks*. Invite your family and friends to this service of thanksgiving.

The Angel Tree is in the welcome center decorated with angels, each with the name of a gift request printed on the back for a special needs child or youth. Select an angel(s) then purchase the gift. Bring the **unwrapped gift** to church by **Sunday, December 8th**, and place it under the Angel Tree. Please note, gifts will be delivered to the Gemme Services for processing. Therefore, gifts must be brought to the church by the deadline. Any questions about the Angel Tree, contact Rosalie Lisa or Marlene Hansley.

Have you ordered a poinsettia to decorate the sanctuary this Christmas? Order forms are available on the desk in the welcome center and the November issue of *New Hanover Highlights*. Plants may be sponsored in memory of (for someone who has passed away) or in honor of (someone who is living). The sponsored plants will be listed in the Christmas Eve bulletins and may be picked up AFTER the 8:00 Christmas Eve service. To sponsor one or more plants, complete a Poinsettia Order form and return the form along with payment (checks made payable to NHELCC) to the church or place it in the offering plate. Be sure to include the number of plants you would like. Also, be sure to mark the order form if you will pick up your plants or if you wish to have the plant given to a homebound member. If you are unable to pick up your poinsettia at that time, call or text Barb Eisenhart at 610-316-5909. **Orders are due by Monday, November 24th**.

Survive the Holidays is a GriefShare event focused on helping those who lost a loved one face the upcoming holidays. Two sessions are offered – Tuesday, November 19th, 10:00 – noon, **or** Tuesday, December 3rd, 6:00 – 8:00 PM. The program offers practical, actionable strategies for making it through the holiday season. The cost is \$7 for the book. Scholarships are available. You'll view a video featuring advice from people in grief who've faced the holidays after their loss. Facilitators who have experienced grief-filled holidays will lead us in discussion of how to manage all holidays and special dates in your life now. Register online at <https://www.griefshare.org/events/248279> for November 19th or at <https://www.griefshare.org/events/248280> for December 3rd.

Advent Social is on Sunday, December 1st, from 2:00 – 4:00 PM Join us for an afternoon of Advent-themed fun as we kick-off the new church year. This year we will be making gingerbread houses, Advent chains, decorating cookies, playing holiday themed games and of course having snacks. This is a Thrivent service project so we ask you to bring individual size personal care items, Chapstick, hand cream, tissues, toothpaste, toothbrush, etc., and/or individually packaged snacks to put in our December senior bags delivered to our homebound and senior living members when we go out Christmas caroling. Come out and help us get ready for the Christmas season! Look for the signup sheet in the welcome center. **Deadline to sign up is Sunday, November 25th.**

Kids and youth This year's Christmas Pageant requires very little rehearsal time! Rehearsals will be held during JAM on Sundays, December 1st and 8th, (10:15-11:15). The pageant will be held on Sunday, December 15th, following worship and in place of JAM. Parents, let Nikki Young know if your child would like to participate. Older kids and youth are needed to read. We have plenty of parts for the younger ones too. The pageant, Scuba Christmas, will feature both music from this year's Kids Camp program as well as holiday favorites.

The NHELCC Book Club is reading *All the Colors of Dark* by Chris Witaker. All are welcome to join the Book Club on Tuesday, December 3rd, at 6:30 PM for dinner and book discussion. Readers will meet at Barrel and Ale (**please note the new location**), 961 North Reading Avenue in Boyertown. If you have any questions about this event, contact Sharon Tracey at LBD36@aol.com.

Blue Christmas Service Wednesday, December 18th, 7:00 PM, in the Sanctuary Sometimes the holiday season is just too much joy for how we are feeling. Maybe life is too much, or you are missing a loved one and are not feeling as happy as normal. Maybe you just want to slow down from the hustle of the days leading up to Christmas and reflect. The Blue Christmas Service gives you time to reflect and meditate.

This year's Blue Christmas Service **is held on the Loaves & Fishes dinner night**, so you may come at 5:45 for dinner and fellowship and then come to the service. See Nikki Young with

any questions.

The Boyertown Alumni Marching Unit presents the 20th holiday concert on Saturday, December 7th, 7:00 PM at the MStar Church. Light refreshments will be available following the concert. A free-will offering for Boyertown Area Multi-Service will be received. MStar is located at 100 Limekiln Road in Bechtelsville.

The Director's Big Band Christmas Concert will be held at St. John's Evangelical Lutheran Church will be held on Saturday, December 14th, at 7:00 PM. St. John's is located at 45 North Reading Avenue in Boyertown. For more information, go to stjohnsboyertown.org.

Resources

Want to keep up with all the latest news from NHELCC?

Subscribe to the bi-weekly Constant Contact communication emails. You will receive a weekly announcement on Monday and a worship reminder on Saturday. If you are not already receiving these emails, you can use this QR code and sign up today using a very simple, secure site.



Do you enjoy the praise band songs? Would you like to get to know them better? This [playlist](#) includes over fifty songs that our praise band has done, and more will be added in the future. You will need to download Spotify (it's free!) to listen to the songs.



Peer Support Information The Ferns Peer Run Respite is a local mental health non-profit resource in Montgomery County. The Ferns provides a supportive and calm environment for individuals in need and not able to interact in other available mental health resources. The Ferns is totally peer supported and allows individuals at the respite the time they may need to recover or seek additional treatment. If you know an individual who may need this service, contact the church and leave a message for the peer support program or reach out to Pastor Scott.

The Peer Support Ministry webpage on the church's website (newhanoverlutheran.org) offers resources for mental health and wellness. Visit the webpage for information.

Mental Health and Wellness Millions of people across the nation are affected by mental health conditions. National Alliance on Mental Illness (NAMI) has local centers in both Reading and Lansdale. They offer in-person and online support groups. NHELC has links with helpful information available on our website (newhanoverlutheran.org) or contact NAMI Helpline or PA Addiction Helpline directly.

NAMI Help Line 1-800-950-6242 is available Monday - Friday 10:00 AM to 10:00 PM ET.

Text "Helpline" to 62640 or if in crisis call or text 988.

PA Addiction Helpline 1-800-662-HELP (4357).

Online live chat offered at 1-717-216-0905 or text

You Can Help

NHELC is collecting non-perishable items for Boyertown Area Multi-Service throughout November. Collection boxes are located in the welcome center, fellowship hall and multi-purpose room. Check out the November *New Hanover Highlights* for top needed items.

Readers are needed for the Lessons and Carols service on December 29th. A sign-up sheet is available on the desk in the welcome center.

You can donate to NHELC ministry electronically. Simply point your smartphone camera at one of these QR codes and follow the link.

Tithe.ly QR Code



Simply Giving QR Code



Volunteers are needed to help during the church service: Ushers, Lectors, Children's Sermons, Acolytes and Communion Assistants. Contact Faye Weidner at omiweidner@gmail.com or 484-929-5958 if you can help.

Food Ministry

Food ministry is accepting turkeys for Thanksgiving meals. Can you help by donating a turkey?

More than 200,000 meals have been delivered! NHELC's Loaves & Fishes Food Ministry is changing lives. And, you can be a part of the team. 1) You can donate food. Drop off your donation on Wednesdays between 1 – 2 PM and Sundays between 9 – 10 AM. **Items most needed include: hamburger, chicken (thighs and breast meat), pasta (ziti, elbows, bowties), cheese (mozzarella, cheddar, parmesan), potatoes, fresh fruit (apples, oranges, bananas) and eggs.** 2) Donate money through Thrivent Gift Cards. Place monetary donations on the offering plate or mail to the church. 3) Deliver meals. Sign up at <https://www.newhanoverlutheran.org/loaves-fishes-food-ministry/>.

Thank You Note: NHELC Food Ministry,
Please accept this small donation to help with your Christian example of sharing.
And a special blessing for Vicki and Tim Mutter's reliable and cheerful delivery service. John M.

Reconciling in Christ

Do you want to participate in a one-to-one discussion around the possibility of New Hanover becoming a Reconciling in Christ church, welcoming to all - especially to those identifying as LGBTQIA+, racially diverse, or gender diverse? Contact Sharon Tracey, Diane Bealer, Josh Young, Janet Psota, Rick Hausch or Pastor Scott.

Got a question for the Reconciling in Christ (RIC) team about their journey? Jot down your question (paper provided at the desk) and put it in the box on the desk in the Welcome Center. The team will try to answer your question(s). Be sure to provide your preferred contact information.

Pronouns – Why are they important? November 24th
We welcome Dr. Dolly Singley, (she, hers, her), Director for Disability Services and 504 Coordinator Institute for Student Success at Ursinus College for a Temple Talk during worship on

November 24th. Afterwards, during the adult Sunday School hour, Dr. Singley and members of the team will be available for questions and further discussion in Room 33 of the Christian Education Wing.

The next Reconciling in Christ meeting will be held on Tuesday, November 26th, at 7:00 PM in room 29. Any questions, contact Sharon Tracey, Diane Bealer, Josh Young, Janet Psota, Rick Hausch or Pastor Scott.

“Taking a closer look: What the Bible does and doesn’t say about homosexuality” January 12th at 10:15 AM in Fellowship Hall

The Bible is often used against 2sLGBTQIA+ people to prove that they are condemned by God, and sometimes to justify discrimination and even violence against them. Most often people point to a few verses scattered throughout scripture to justify this. In this workshop we will examine some of these texts, and explore how to respond when the Bible is used against 2sLGBTQIA+ people. The Rev. Bruce Davidson, a retired pastor in the ELCA, will be leading the presentation. At the end of his presentation questions will be received. We will meet in Fellowship Hall immediately following the worship service. Drinks and snacks will be available.

“Allyship” January 19th Allyship is an action verb defining the lifelong process of building relationships based on trust, consistency, and accountability with minoritized individuals and/or groups of people with the strategic intentions to become collaborators to promote equity.

We welcome Dr. Dolly Singley, (she, hers, her), Director for Disability Services and 504 Coordinator Institute for Student Success at Ursinus College for a Temple Talk during worship on January 19th. Afterwards, during the adult Sunday School hour, Dr. Singley and members of the RIC team will be available for questions and further discussion in Room 33 of the Christian Education Wing.

Prayer Requests

Long-term: Sarah Bowman, Keeley Staples, Logan Conley, Tina Farrell, Carol Buchholtz Yost

Shut-in: Penny Frymoyer

Grieving: family and friends of Darlene Latshaw

Military: Shawn Dietz, Michael McHugh, Kevin Dugan, Jason Bernhard, Craig Geiser, Patrick Mathias, Steven Kane, William Zearfoss, Will Wilson V, Milton Jack Repa, Kyle Woods, Danny Foust

Peace for violence in our area and nationally

| | | |
|--|----------------------|---------------------|
| Katy Mahon-Miller | Luann Hanley | Carol Estes |
| William Trotter | Kathy Kane | Maxwell Girard |
| Pat Fryer | Jean Renninger | Pr. Kork Moyer |
| Betty Lou Shadle | Julia Hauck | Tony Mancini |
| Raul Castro | Amy LeVan | Jeffrey Kunsch |
| Wilma Lahr | Melissa | Mary Lou |
| Doug Weaver | Joan Wagner | Robert Ganovsky |
| Dorothy Bingaman | Emily Ocelus | Eric & Wendy Hess |
| Sue Care | Deb Matthews | Marceline |
| Anne Eshleman | Daniel Johnson | Chris Fatzinger |
| Hank Droneberg | Pena family | Kim Frain |
| Jen Perez | Frank D. | Pam Helfrich |
| Barb & Tom Faust | Andy Van Dyke | Janet |
| Pam Abbott | Holli Muffler | Louise Karns |
| Pr. Jennifer Phelps | Jessica Trout | Verdie Smith |
| Mabel Gaugler | Sandy Wesner | Helen Foulke |
| Carla Hausmann | Joan Price | Betty Seroski |
| Ralph Borneman | Lucille Powell | Virginia Specht |
| Jeffrey Weems | Joan Scheffey | Arnold Amundsen |
| Chuck Beck | Ally Musser & family | Rich Freed |
| Joe | Joe | Casey Flack |
| Tim Mutter | Denton Quick | David Helfrich, Sr. |
| Tara Hauck | Patricia Kemp | Ron Seasholtz |
| Jennifer, Brendt, Declan & Conor Budnick | | Penny Garber |
| Hazel LeVan | Lynn Amundsen | David Gottshall |

New Hanover Evangelical Lutheran Church

2941 Lutheran Road

Gilbertsville, PA 19525

Office Hours: Mon. – Fri., 9 AM – 2 PM

Call 610-326-1335 for an appointment

Contact Information

Pastor, The Rev. Scott Staub

psstaub@gmail.com

Director of Children, Family & Youth Ministry, Nikki Young

nikki.young@newhanoverlutheran.org

Church Office Manager, Susan Gutshall

susan.gutshall@newhanoverlutheran.org

Director of Music Ministry, Patricia Nyce

patricia.nyce@newhanoverlutheran.org

Food Ministry Director, Chris Fatzinger

Cfatzinger@chris-cooks.com

Grace Band Director, Lindsey Waltermyer

goldielw@gmail.com

Handbell Choir Director, Barbara Eisenhart

eisenbarb@aol.com

Peer Support Recovery Ministry Team

peersupport@newhanoverlutheran.org

Sexton, Jen Boyer

jcboyer0408@gmail.com

Bookkeeper, Maria Boyer

mariaboyer@comcast.net

Cemetery, Norm Hunsberger

nhunsberger29@gmail.com

Celebrating 325 Years
1700-2025



Still Making History

Upcoming Events at NHEL C

November

- 17th Angel Tree gifts requests are available
19th 10:00 **Survive the Holidays** a GriefShare event
20th **Joy to the World** bus trip
5:45 **Loaves & Fishes Dinner**
23rd 8:30 **Ordinary Holiness Yoga Class**
24th **Pronouns** Temple Talk and discussion
27th 7:00 **Thanksgiving Eve Service**

December

- 1st 10:00 **Budget Information Meeting**
2:00 **Advent Social**
2nd 6:30 **Family Learning Center Information Meeting**
3rd 6:00 **Survive the Holidays** a GriefShare event
4th 6:30 **Budget Information Meeting**
7th 9:00 **Family Learning Center Information Meeting**
8th 10:00 **Congregational Meeting**
Angel Tree gifts are brought to church
15th 10:15 **Christmas Pageant**
18th 5:45 **Loaves & Fishes Dinner**
7:00 **Blue Christmas**
22nd **Caroling**
24th 4:00 **Family Christmas Eve Service**
8:00 **Christmas Eve Service**
29th 9:00 **Lessons and Carols Service**

January

- 12th **Taking a Closer Look** Temple Talk and discussion
Everybody's Birthday Party
15th 5:45 **Loaves & Fishes Dinner**
19th **Allyship** Temple Talk and discussion
26th 10:15 **Cheers to Us Gathering** entertainment and lunch

In today's lesson, Jesus tells us to be ready. How did you get ready for church today?

Circle the ways below.



PRE-READER

Pentecost 26

- Today is the **26th Sunday** after Pentecost.
- Next week is the **final week** in the season after Pentecost.
- The next season is **Advent**.

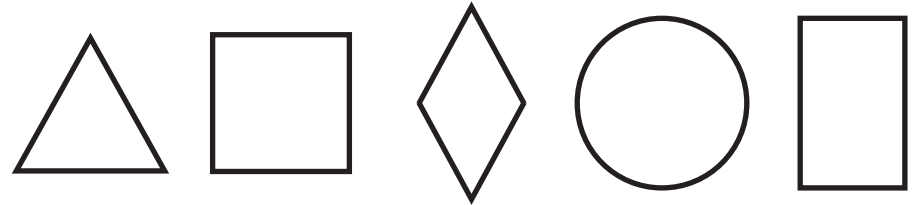
God created trees that come in all sorts of shapes, colors, and sizes. If you could create your own kind of tree, what would it look like? What would you call it?



My new tree is called: _____



Design your own temple for God in the space below using these shapes.

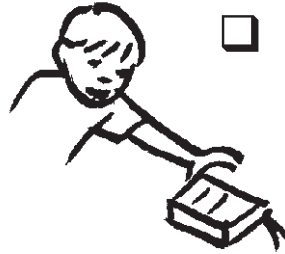
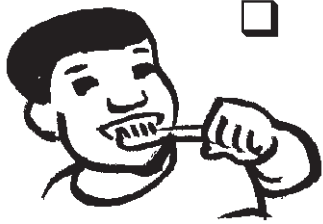


Jesus told Peter that even though the temple towers will fall over, he should not be afraid. God is working for good!



How Do You Get Ready?

Today's story is about being ready. Think of some ways you got ready for church this morning. Below is a list of activities people do in the morning to get ready for church. Check off the ones you did this morning! Use the blank spaces to add any other things you did. Then color in the pictures.



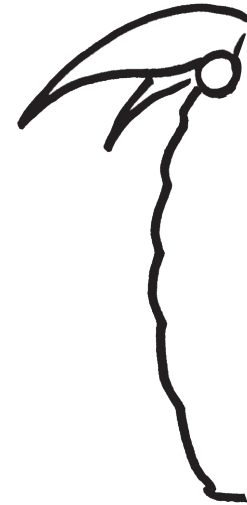
READER

Pentecost 26

- Today is the **26th Sunday** after Pentecost.
- Next week is the **final week** in the season after Pentecost.
- The season that comes after the season after Pentecost is **Advent**.

Finish 'Em Up!

The season after Pentecost is almost finished, but these tree pictures aren't quite finished yet! Using the half of the tree provided, complete the rest of the three trees below.



Build the Temple

In today's Bible story, Jesus warned Peter that the temple stones will fall down because God is on the move. Using the foundation below, design a temple for God below.



Today's lesson comes from the book of Mark. Mark is one of the four Gospels. The word Gospel means good news!



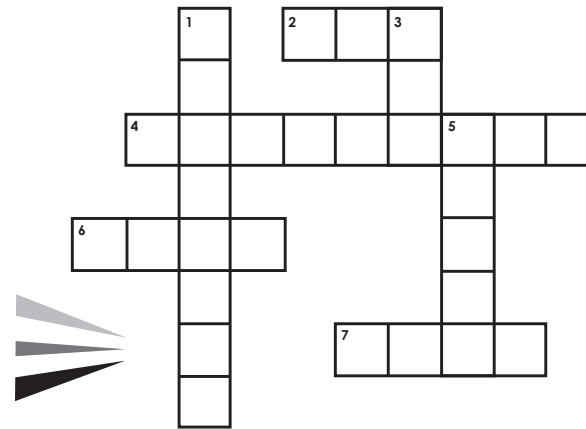
In order to complete today's memory verse, fill in crossword puzzle using the clues.

"You show me the _____
7 Across

of life. In your presence there is _____ of
1 Down

_____ ; in your _____ are
2 Across 5 Down 6 Across

pleasures forevermore." – Psalm 16:11



ACROSS

2. Happiness
4. Delights, joys
6. Body part used to give high fives
7. Road, direction, way

DOWN

1. Opposite of emptiness
3. Opposite of me
5. Opposite of left

AHHHH!

When Jesus told the disciples the temple would fall down, the disciples were afraid at first. In the space below, write or draw some things you're afraid of. Then at the bottom, brainstorm some ways you can overcome your fear.

We Praise You, O God



1 We praise you, O God, our re - deem - er, cre - a - tor;
2 We wor - ship you, God of our fa - thers and mo - thers;
3 With voic - es u - nit - ed our prais - es we of - fer



in grate - ful de - vo - tion our trib - ute we bring.
through tri - al and tem - pest our guide you have been.
and glad - ly our songs of thanks - giv - ing we raise.



We lay it be - fore you; we kneel and a - dore you;
When per - ils o'er - take us, you will not for - sake us,
With you, Lord, be - side us, your strong arm will guide us.



we bless your ho - ly name; glad prais - es we sing.
and with your help, O Lord, our strug - gles we win.
To you, our great re - deem - er, for - ev - er be praise!

"We Praise You, O God" Text: Julia C. Cory, 1882-1963. Music: KREMSER, A. Valerius, Nederlandtsch Gedenckclanck, 1626. Text and music are in public domain.

20 D B5 D5
 me down. I'm sure you've had a day like me, when noth - in' seems to set you free from

PRE-CHORUS 2

23 G5 B5 A5 D E
 bur - dens you can't car_r_y all a - lone, yeah. In your weak - ness, He is strong - er.

27 Gmaj7 D
 In your dark - ness, He shines through. When you're cry - in',

30 E7 G D
 He's your com - fort. When you're all a - lone, He's car - ry - in' you. I get

CHORUS 2

1, 3

33 % D E7 G
 down, He lifts me up. I get down, He lifts me up. I get down, He lifts me up. I get

(1, 3) | 2, 4

36 D G D *Fine*
 down. I get down, He lifts me up. Ev - 'ry time I'm down the Lord lifts me up.

BRIDGE

Bm D G D Bm
 This val - ley is so deep, I can bare_ly see the sun. I cry out

CHORUS 1

44 D G B5 A5 D
 for mer_cy, Lord, and You lift me up a - gain. I get down, He lifts me up. I get

Whom Shall I Fear (God Of Angel Armies)

Words and Music by
Chris Tomlin, Ed Cash
and Scott Cash

VERSE 1

$\text{♩} = 75$ C Dm7 C/E F2

You hear me when I call. You are my morn - ing song. Though dark - ness fills the night,

4 Am7 F2 C

it can - not hide the light. Whom shall I fear? You crush the en - e - my

8 Dm7 C/E F2

un - der - neath my feet. You are my sword and shield, though trou - bles lin - ger still.

CHORUS 1a

Am7 F2 Am7 G C Am7 G C

Whom shall I fear? I know Who goes be - fore me, I know Who stands be - hind:

15 Am7 F2 G C Am7 G C

The God of an - gel ar - mies is al - ways by my side! The One Who reigns for - ev - er,

18 Am7 G C Am7 F2 G C

He is a friend of mine. The God of an - gel ar - mies is al - ways by my side!

2nd time to Coda \oplus

VERSE 2

22 C F2

My strength is in Your name, for You a-lone can save. You will de-liv-er me.

26 Am7 F2 Am7 F2 G D.S. al Coda

Yours is the vic-to-ry. Whom shall I fear? Whom shall I fear?

BRIDGE

31 C F2 C G C

side! And noth-ing formed a- gainst me shall stand! You hold the whole world in Your

35 F2 C Am7 G F2

hands. I'm hold-ing on to Your prom-is-es; You are faith-ful, You are

39 1 2 G G Am7 G/B

faith-ful. faith-ful, You are faith-ful.

CHORUS 1b

Am7 G C Am7 G C Am7 F2

I know Who goes be-fore me, I know Who stands be-hind: The God of an-gel ar-mies

46 G C Am7 G/B C Am7 G C

is al-ways by my side! The One Who reigns for-ev-er, He is a friend of mine.

CHORUS 1c

49 Am7 F2 C

The God of an-gel ar-mies is al-ways by my side! I know Who goes be-fore me,


52 G/B Am7 F2



I know Who stands be - hind: The God of an - gel ar - mies is al - ways by my side!

Detailed description: This block contains the first line of musical notation, measures 52 to 54. It is written on a single treble clef staff. Measure 52 starts with a G/B chord and contains a quarter rest followed by a quarter note G4, a quarter note A4, and a quarter note B4. Measure 53 has an Am7 chord and contains a quarter rest followed by a quarter note G4, a quarter note A4, and a quarter note B4. Measure 54 has an F2 chord and contains a quarter rest followed by a quarter note G4, a quarter note A4, and a quarter note B4. The lyrics are placed below the staff, aligned with the notes.

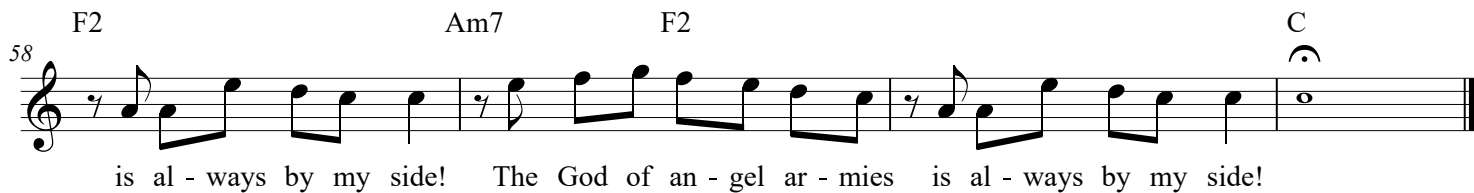
55 C G/B Am7



The One Who reigns for - ev - er, He is a friend of mine. The God of an - gel ar - mies

Detailed description: This block contains the second line of musical notation, measures 55 to 57. It is written on a single treble clef staff. Measure 55 starts with a C chord and contains a quarter rest followed by a quarter note G4, a quarter note A4, and a quarter note B4. Measure 56 has a G/B chord and contains a quarter rest followed by a quarter note G4, a quarter note A4, and a quarter note B4. Measure 57 has an Am7 chord and contains a quarter rest followed by a quarter note G4, a quarter note A4, and a quarter note B4. The lyrics are placed below the staff, aligned with the notes.

58 F2 Am7 F2 C

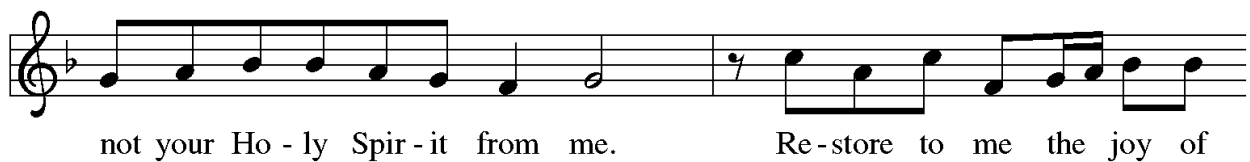
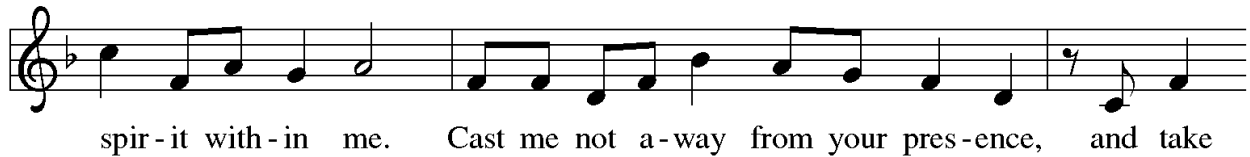
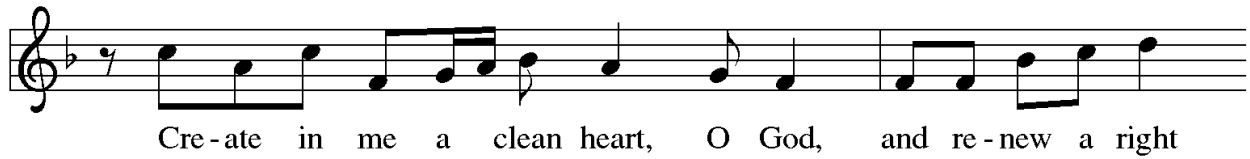


is al - ways by my side! The God of an - gel ar - mies is al - ways by my side!

Detailed description: This block contains the third line of musical notation, measures 58 to 60. It is written on a single treble clef staff. Measure 58 starts with an F2 chord and contains a quarter rest followed by a quarter note G4, a quarter note A4, and a quarter note B4. Measure 59 has an Am7 chord and contains a quarter rest followed by a quarter note G4, a quarter note A4, and a quarter note B4. Measure 60 has an F2 chord and contains a quarter rest followed by a quarter note G4, a quarter note A4, and a quarter note B4. The final measure of the system (measure 61) has a C chord and contains a whole note G4. The lyrics are placed below the staff, aligned with the notes.

Create in Me a Clean Heart

Offering Song



“Create in Me a Clean Heart” Music: Richard W. Hillert, b. 1923. Music © 1978 Lutheran Book of Worship, admin. by Augsburg Fortress. All rights reserved. Reprinted and streamed with permission under One License #A-701229.

My Faith Looks Up to Thee



- 1 My faith looks up to thee, thou Lamb of Cal - va - ry,
- 2 May thy rich grace im - part strength to my faint - ing heart,
- 3 While life's dark maze I tread and griefs a - round me spread,
- 4 When ends life's tran - sient dream, when death's cold, sul - len stream



Sav - ior di - vine! Now hear me while I pray, take all my
my zeal in - spire; as thou hast died for me, oh, may my
be thou my guide; bid dark - ness turn to day, wipe sor - row's
shall o'er me roll; blest Sav - ior, then, in love fear and dis -



guilt a - way, oh, let me from this day be whol - ly thine!
love to thee pure, warm, and change - less be, a liv - ing fire!
tears a - way, nor let me ev - er stray from thee a - side.
trust re - move; oh, bear me safe a - bove, a ran - somed soul!

"My Faith Looks Up to Thee" Text: Ray Palmer, 1808-1887. Music: OLIVET, Lowell Mason, 1792-1872. Text and music are in public domain.